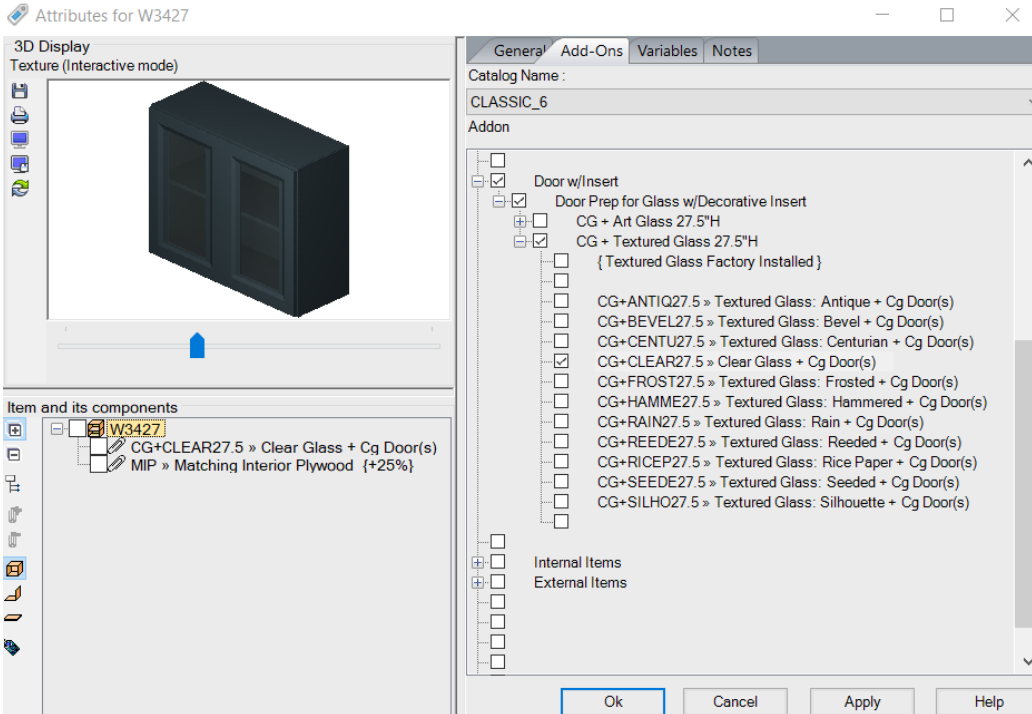


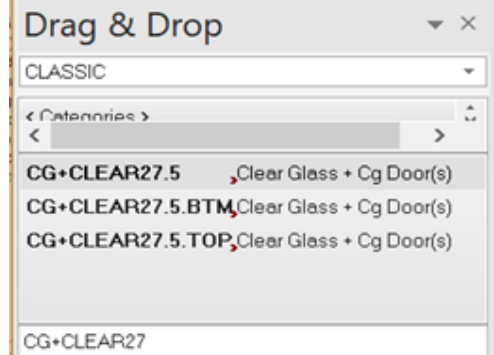


## Thomasville Experience: Modification Glass w/Insert

- Right Click on the cabinet on the Floor Plan and go to attributes. Locate the option for Door w/Insert. Click the + to expand drop down menu and select Art Glass or Textured Glass.



If the option to select **Door w/Insert** is not in your drop down menu, verify glass size availability and use drop down menu as a work around to modify door and add glass.



**CG= Cut for Glass.**  
**+Clear= Type of Glass**  
**27= Height of cabinet**

Left click on Glass option and Insert location in Drop Down menu and drag and drop on cabinet. Use the .BTM or .TOP for stacked cabinet glass location options. Verify MIP was added when attaching glass.

*Thomasville Cabinetry*  
*Available only at Home Depot!*  
*We are Home Depot!*

