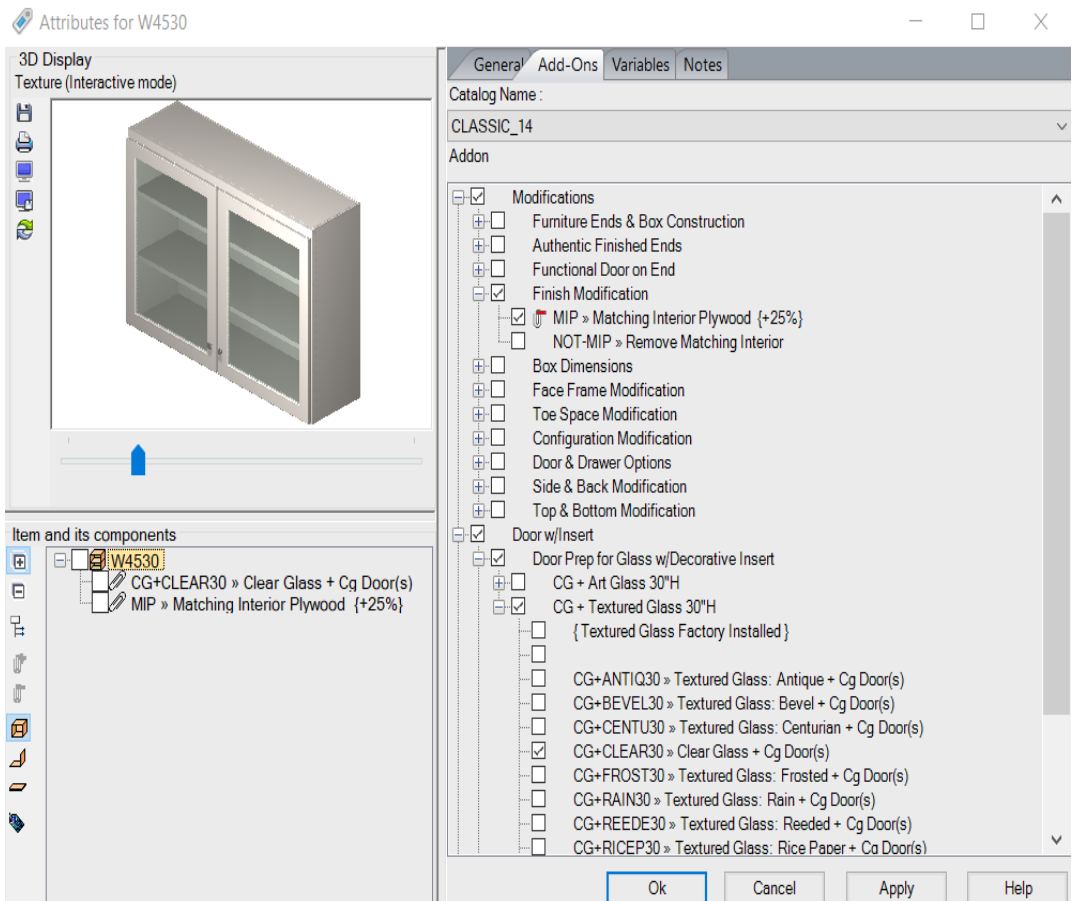




October 2021

TH&A Monthly Training  
[www.THAHD.com](http://www.THAHD.com)*Thomasville Experience:*  
**Drag & Drop to Add Glass**Do you have a  
20-20 question?Ask your  
Thomasville Representative!**Thomasville Experience:  
Using Drag & Drop to Add Glass Modification**Always **DWYSBO**, Design With Your Spec Book Open!**This Tip will work in the Studio, Classic & Artisan  
Collections.****We all know how to find Glass under cabinet  
Add-Ons under attributes.****TH&A**

Todd Haley &amp; Associates

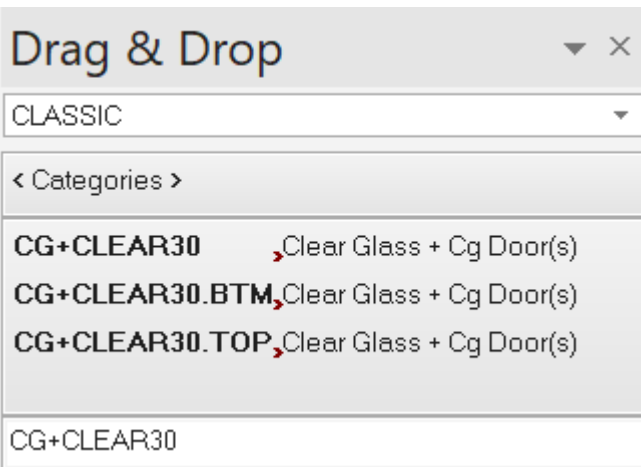
**Ginny Edens****Your Store Representative**  
770-424-7518 office  
gedens@toddhaley.com**Adam Johnson**678-736-9934 cell  
ajohnson@toddhaley.com**Paul Cunningham**615-681-2686 cell  
pcunningham@toddhaley.com**Thomas D. Clarke**225-240-0529 cell  
tclarke@toddhaley.com[www.thomasvillecabinetry.com](http://www.thomasvillecabinetry.com)  
[www.homedepot.com](http://www.homedepot.com)Designer Handbook. [www.mbcidesignerhandbook.com](http://www.mbcidesignerhandbook.com)User Name: **homedepotus**Password: **Depot#1*****See Next Page to continue:***

## Using Drag & Drop to Add Glass Modification

You can easily add Glass to multiple cabinets without having to go through attributes on each cabinet.

In your Drag and Drop Menu type in CG+(type of glass) plus cabinet height.

Example: **CG+CLEAR30**



**Note: This feature is not available in Nouveau.**

Simply Left click on the Glass type and position you choose to add and Drag and Drop on each cabinet. This will work with any cabinet that will accept glass. It will also add the matching interior.

Always verify your glass size availability with the glass chart found in

**MBCIDesignerHandbook.**

*Thomasville Cabinetry  
Available only at Home Depot!  
We are Home Depot!*

