



November 2019
 TH&A Monthly Training

*Copying and Placing items
 With the Room Compass*

Do you have a
 20-20 question?

Ask your
 MasterBrand Representative!

TH&A

Todd Haley & Associates

www.thomasvillecabinetry.com
 www.homedepot.com

Using the Room Compass to Copy and Place Items

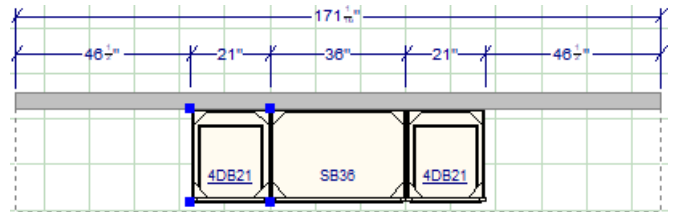
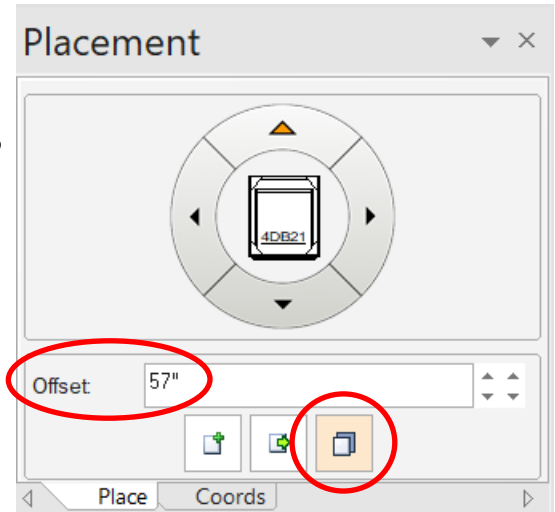
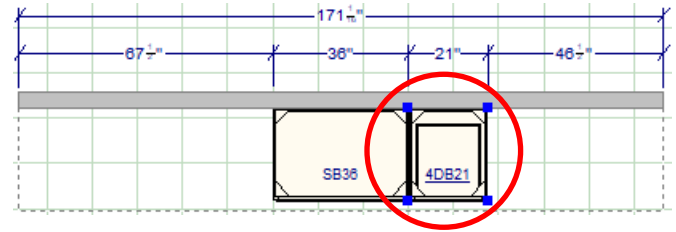
The Room Compass can be used to copy items in your design with fewer mouse clicks.

Through the use of the Room Compass, you are able to duplicate and place an item with all of its attributes anywhere on your floorplan. As pictured here, the 3rd icon on the far right below the "Offset" dimension box is the Copy Icon.

Use this Icon to duplicate cabinets with complex modifications or fillers that have been sized for a specific purpose in mind.

Since 2020 is set up to place items in a clockwise manner, when copying an item on the same plane and placing it in a counter-clockwise direction to another item, total the existing cabinet sizes and enter that value in the offset box as per the example above. The 57" listed in the offset box above is the total width of the original 4DB21 and SB36.

The copied 4DB21 with all its attributes can now be placed to the left of the sink base with just one mouse click.



Thomasville, We Are Home Depot!

*Thomasville Cabinetry
 Available only at Home Depot!
 We are Home Depot!*

