



June 2021
 TH&A Monthly Training
www.THAHD.com

Thomasville Experience:
Moving Labels in your Design

Do you have a
 20-20 question?

Ask your
 Thomasville Representative!

TH&A

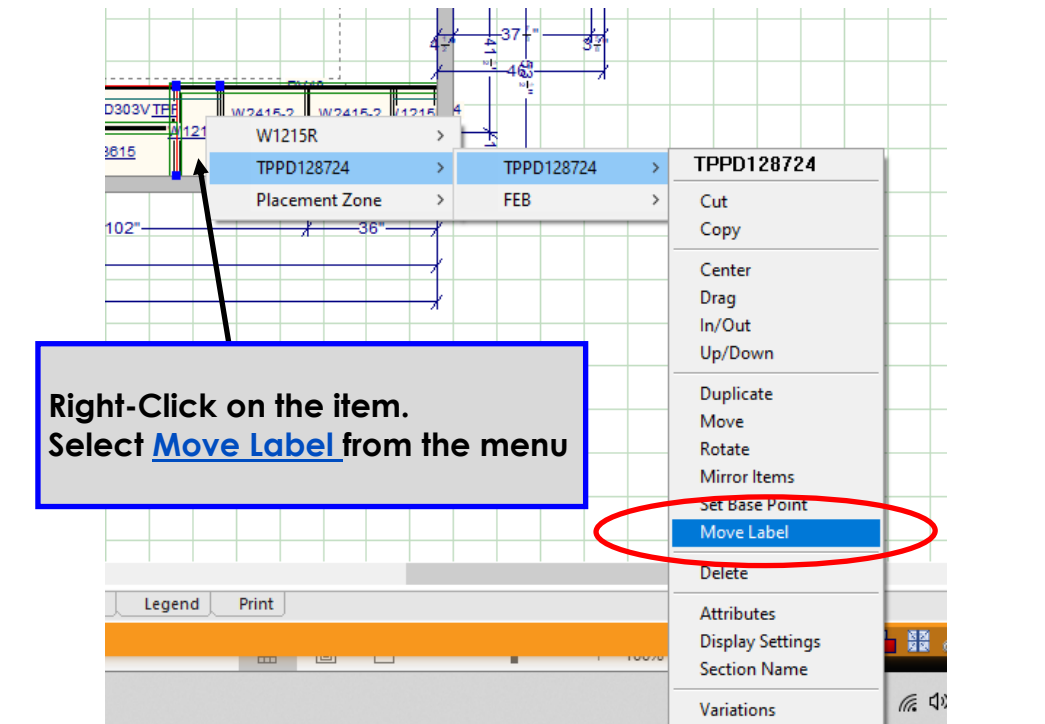
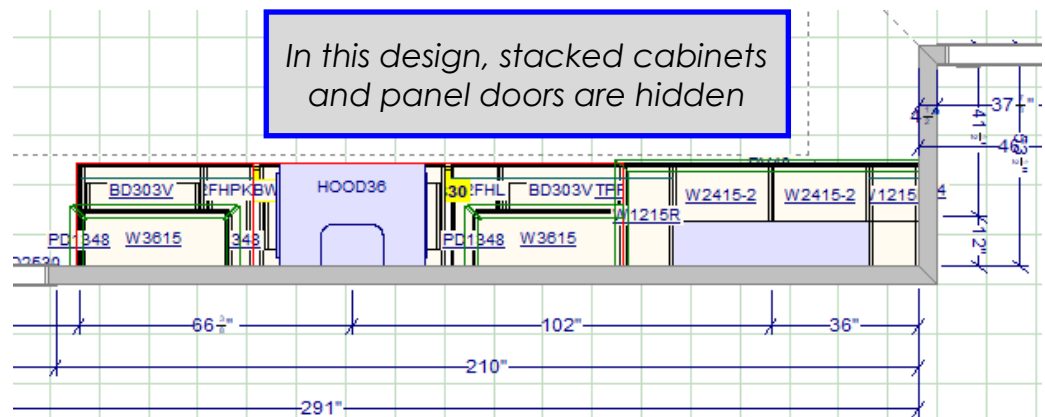
Todd Haley & Associates

www.thomasvillecabinetry.com
www.homedepot.com

Thomasville Experience: Moving Labels in your Design

When working on a design, sometimes labels become buried and can not be seen in your floor plan or elevations. This can cause confusion during the installation process.

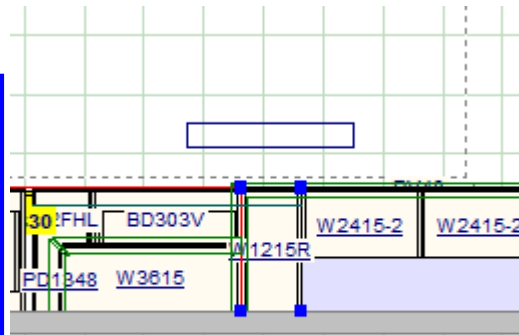
Moving your labels is a quick and easy way to make sure your plan is followed.



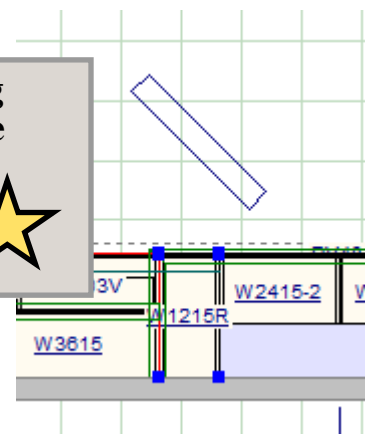
See Next Page to continue:

Thomasville Experience: Moving Labels in your Design

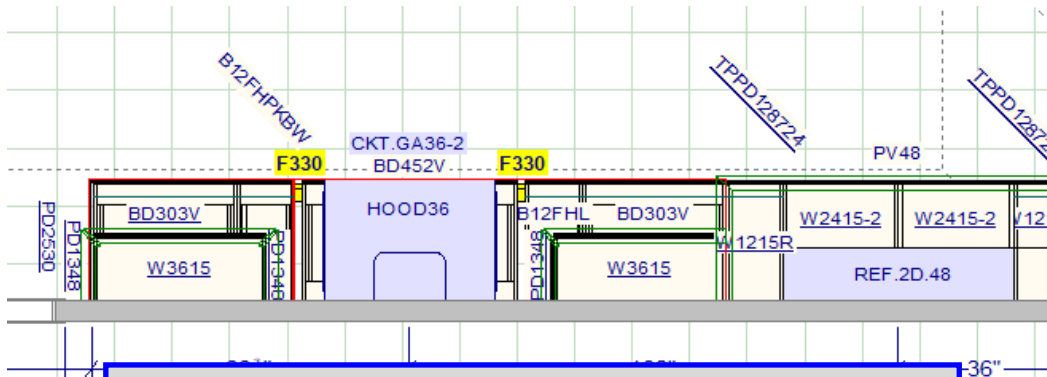
Your cursor will produce a rectangular box. You can move this box to the location where you would like your label to appear.



By right-clicking while placing the box, you can rotate the label.



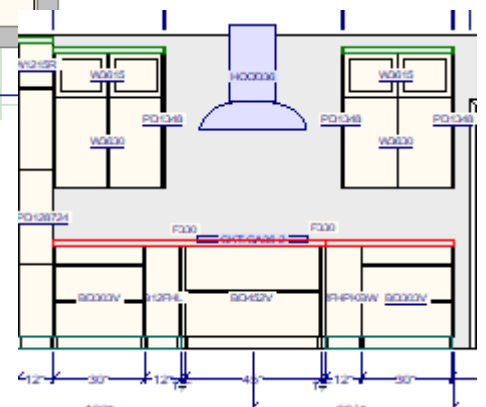
Once the label is in the correct location, Left-Click to lock it in place.



By moving the labels in my floorplan and elevation, small items and buried items are now easy to see.

This also makes them easy to click!

You can click on the label of an item to select it, making fillers and panels easy to select.



*Thomasville Cabinetry
Available only at Home Depot!
We are Home Depot!*

