

# Thomasville® Nouveau

## CABINETRY



### The Nouveau Report

January 2022

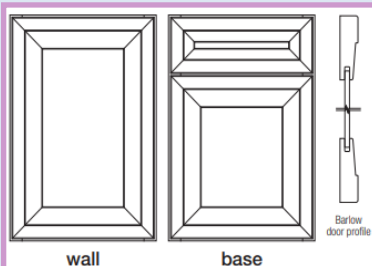
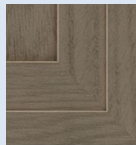
Visit us at  
[thomasvillecabinetry.com](http://thomasvillecabinetry.com)  
Or  
<https://www.THAHD.com>

## Barlow

### Barlow Oak



- \* 3/16" mitered door w/ veneer center panel
- \* 5-pc recessed DF w/ 1/2" solid center
- \* Slightly rounded outside profile
- \* Drawer bottom and back will match interior of cabinet
- \* Dusk is our featured finish for January



Oak \$333/LF  
R. Alder \$333/LF  
Maple \$339/LF  
Cherry \$363/LF  
Rift Oak \$363/LF

#### Construction Specifications/Options:

|                                |         |
|--------------------------------|---------|
| White Interior                 |         |
| Natural Interior               | ✓       |
| Glass Inserts                  | ✓       |
| Plywood Construction Available | Upgrade |
| Metal Drawers*                 | ✓       |
| Wood Drawers                   | ✓       |

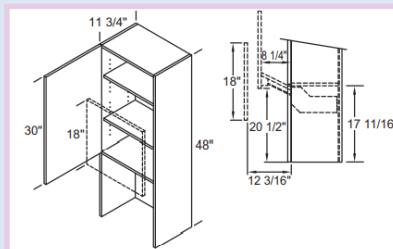
NEW

## Wall Appliance Garage Lift Door

### WAGL \_ \_ \_ \_ L or R

Single Doors 18", 21", 24" wide  
Double Doors 24", 27", 30" wide  
Heights 48"-58.5"

Lift up hinge system holds door in any position.  
The upper cabinet will have 2-3 adj. shelves



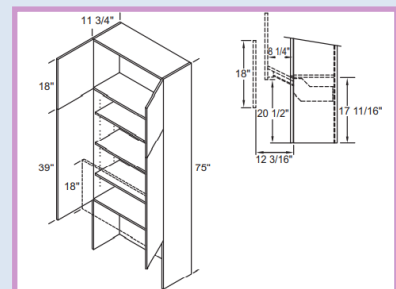
PGS.  
96-99

### STWAGL \_ \_ \_ \_ (stacked wall)

Widths per above. Heights 66"-76.5"

Lift up hinge system holds door in any position.  
The lower cabinet will have 2-3 adj. shelves

PGS.  
100-104



**TH&A**

Todd Haley & Associates

Adam Johnson

678-736-9934

[ajohnson@toddhaley.com](mailto:ajohnson@toddhaley.com)

Ginny Edens

770-424-7518

[gedens@toddhaley.com](mailto:gedens@toddhaley.com)

Paul Cunningham

615-681-2686

[pcunningham@toddhaley.com](mailto:pcunningham@toddhaley.com)

Thomas D. Clarke, CKD

225-240-0529

[tclarke@toddhaley.com](mailto:tclarke@toddhaley.com)



### What Designers are saying about Thomasville Nouveau:

"Nouveau is a wonderful option with unique species like Bamboo and Acrylics. My customers are also interested in glossy white finishes like Cross Gloss Lilly".

**Tammy Bell HD0770 Hixson, TN**



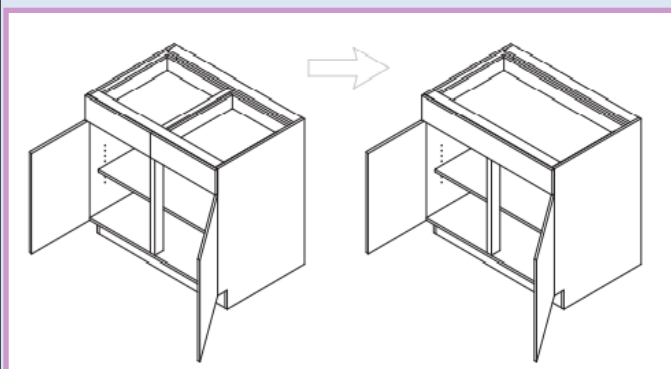
In order to be successful in the new year, stay focused, develop a positive attitude and be passionate with your dreams.

## **Modifications**

### **FWD- Full Width Drawers**

Available on base, desk, vanity, and select tall cabinets with drawers up to 45" wide

PG.38



**Customize the two top drawers with a single drawer box and drawer front. Cabinets with two false fronts can be modified to a full wide false front too.**

## **Embellishments**

### **CLTP-535.2 Colonial Turned Post**



**5"W x 5"D x 35.25"H**  
**Trimable**

Add flair to your kitchen design with this Colonial Turned Post

#### **Species Availability Options**

|         |        |        |                  |       |     |          |     |          |              |            |
|---------|--------|--------|------------------|-------|-----|----------|-----|----------|--------------|------------|
| Acrylic | Bamboo | Cherry | Gloss Thermofoil | Maple | MDF | Melamine | Oak | Rift Oak | Rustic Alder | Thermofoil |
|         |        | ✓      |                  | ✓     | ✓   |          | ✓   |          | ✓            |            |

PG. 379

Thank you for selling your House Brand, Thomasville Nouveau!

We are your partners to help you with the sale every time!

Visit your web page <https://www.THAHD.com>

**TH&A**

Todd Haley & Associates



**MASTERBRAND**  
CABINETS, INC.