

# Thomasville® Classic

CABINETS



MASTER BRAND  
CABINETS, INC.

The Thomasville Report

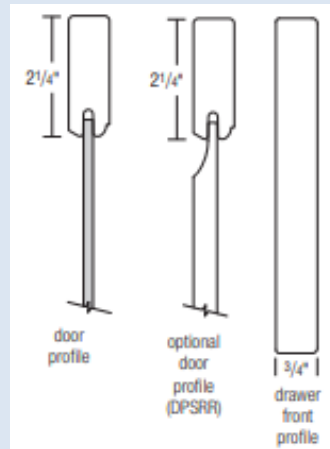
July 2022

Visit us at  
[thomasvillecabinetry.com](http://thomasvillecabinetry.com)  
Or  
<https://www.THAHD.com>



## Patton Cherry Natural

## Full Height Range Top Base

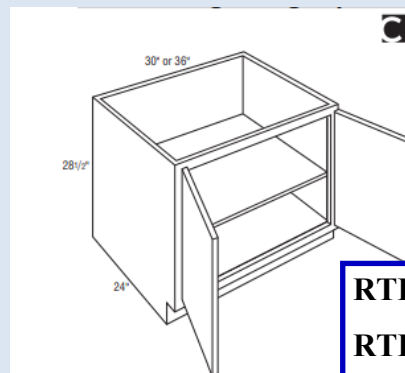


The Patton door style is a great alternative to a true shaker. The slight detail to the inside profile works well in transitional spaces.

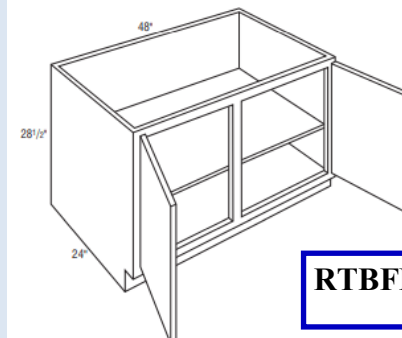
- Full Overlay Veneer flat panel shaker with slight inside profile
- 3/4" solid slab drawer front
- Optional solid reverse raised center panel (DPSRR)

Cherry \$ 292/LF  
Maple \$ 250/LF  
Rustic Alder \$ 250/LF

## RTBFH \_\_ 28.5



RTBFH3028.5  
RTBFH3628.5



RTBFH4828.5CS

- One Full Depth Shelf
- Aligns with standard base cabinet door
- Top Cross Rail 2" high, trimmable to 1"
- For use with front control range tops

PG. 235

TH&A

Todd Haley & Associates

Adam Johnson  
678-736-9934

[ajohnson@toddhaley.com](mailto:ajohnson@toddhaley.com)

Paul Cunningham  
615-681-2686

[pcunningham@toddhaley.com](mailto:pcunningham@toddhaley.com)

Thomas D. Clarke, CKD  
225-240-0529

[tclarke@toddhaley.com](mailto:tclarke@toddhaley.com)

Ginny Edens  
770-424-7518

[gedens@toddhaley.com](mailto:gedens@toddhaley.com)



**What Designers are saying about Thomasville:**  
 “Thomasville has what my customer’s want. Great cabinet selections at great prices. Thomasville is exclusive to Home Depot and selling Thomasville is a win-win for Home Depot and the customers”. **Donna Caldwell HD # 4609– Roanoke, VA**



**“You know you're getting old when the candles cost more than the cake”.**  
**Bob Hope**

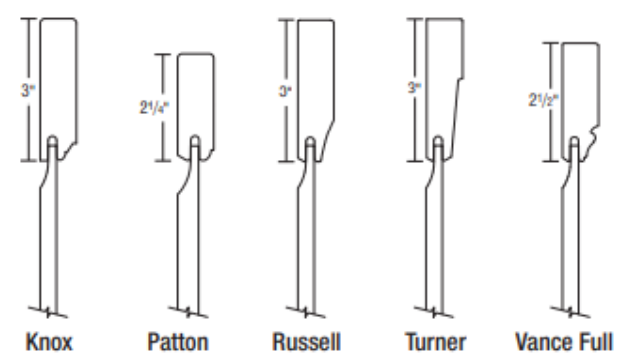
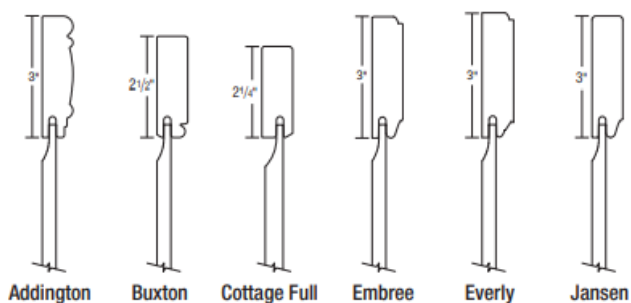
## MODIFICATIONS



### DPSRR-door panel solid reverse raised

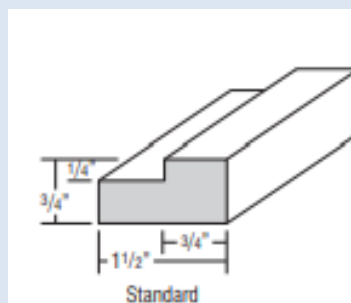
- Replaces veneer center panel w/ solid reverse raised center panel
- Drawer front not affected
- Not available on Cottage Full MDF and Jansen MDF

**PG.48**

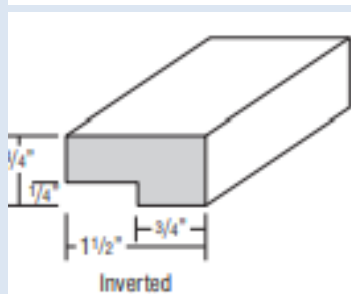


## EMBELLISHMENTS

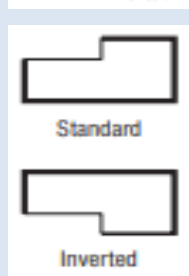
### CPES - Cabinet Panel Edge Square



When used as an under cabinet moulding with full overlay styles, shim at notch or use with under cabinet skin. Standard application can be used as top moulding.



Inverted application is perfect for simple light rail or under cabinet trim.



- Moulding is available in 8' sections.
- Finished edges are indicated by bold lines

**PG.424**

Thank you for selling your House Brand, Thomasville Cabinetry! We are your partners to help you with the sale every time! Visit your web page <https://www.THAHD.com>

**TH&A**  
 Todd Haley & Associates  
  
**MASTER BRAND**  
 CABINETS, INC.