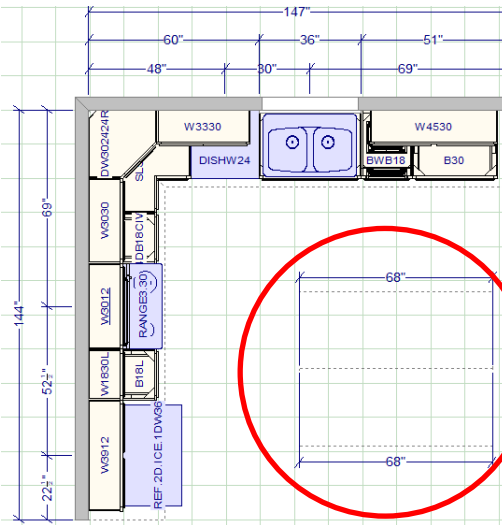
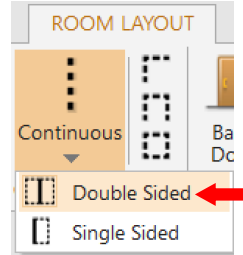




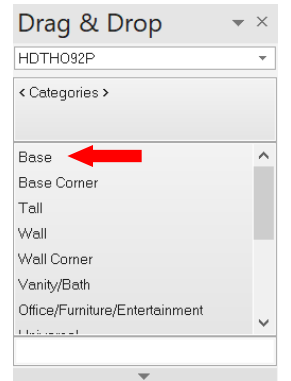
January 2020  
TH&A Monthly Training  
*Thomasville Experience:  
Island Back Panels*  
  
Do you have a  
20-20 question?  
  
Ask your  
MasterBrand Representative!

**Thomasville Experience: Island Back Panels**

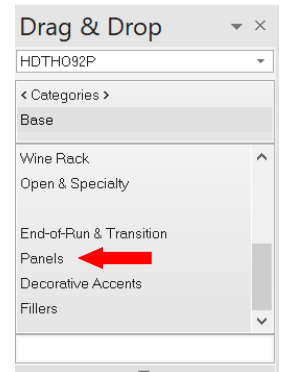
When starting a design, the best practice for islands is to always use a double-sided construction line so that you can place the back panel on an island and subsequently any applied doors or corbels. By starting with a Double-Sided construction line, you will be able to generate your back elevation to properly place these decorative items when working on your design.



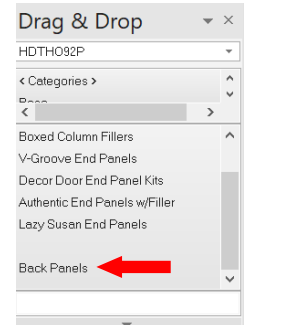
Once you have placed your Island cabinets, double-click on "Base" in your Drag & Drop dialog box.



Scroll to the bottom of the populated list and look for Panels.



Double Click on Panels and scroll to the bottom of the populated list and look for Back-Panels.



Double Click on Back-Panels and look for the BP9634.5CRSGR panel.

**TH&A**  
Todd Haley & Associates

**Ginny Edens**  
Your Store Representative  
770-424-7518 office  
gedens@toddhaley.com

**Josh Wilson**  
205-259-8141 cell  
jwilson@toddhaley.com

**Judson Haley**  
770-769-6809 cell  
jhaley@toddhaley.com

**Mike Wilson**  
770-310-5710 cell  
mwilson@toddhaley.com

**Paul Cunningham**  
615-681-2686 cell  
pcunningham@toddhaley.com

**Sherry Grooms**  
910-367-3913  
sgrooms@toddhaley.com

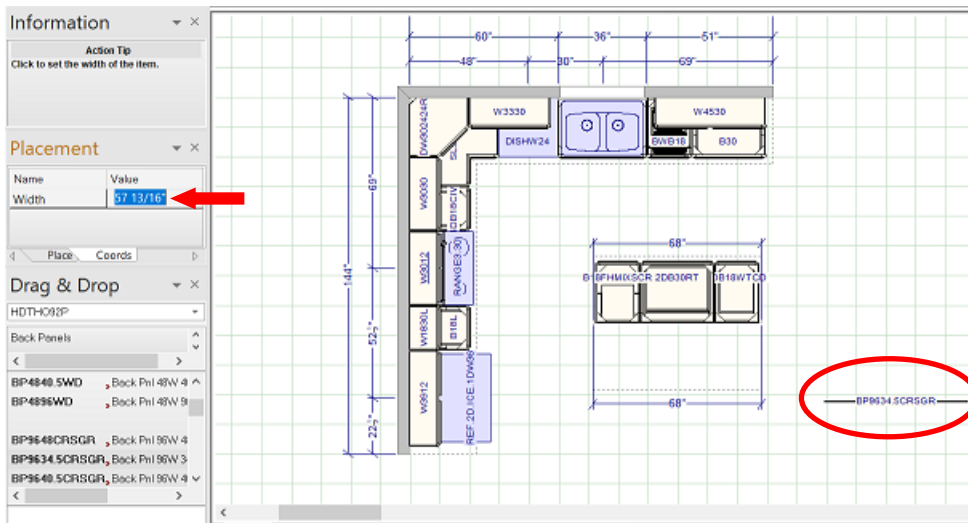
**Thomas D. Clarke**  
225-240-0529 cell  
tclarke@toddhaley.com

**Valerie Hurst**  
704-493-4977 cell  
vhurst@toddhaley.com

www.thomasvillecabinetry.com  
www.homedepot.com

*See Next Page to continue:*

## Thomasville Experience: Island Back Panels



Left click on the panel in the drop-down menu and drag and drop it out on the grid away from the island placement zone. Left-click once and drag the panel width to the right, then using the keyboard type in the desired overall width and hit enter.

Once you have set the length, you may left-click on the panel and float it into position by holding down on the left mouse button.

Align the panel with the end of the island and when you see the snap-to squares, release your mouse. Your panel is now sized and aligned perfectly with the back of your island. You can now add decorative doors, fillers and corbels as needed.

When using panels like this, don't forget to add the OCM8 (outside corner) to your items list since you can't place it in the design.

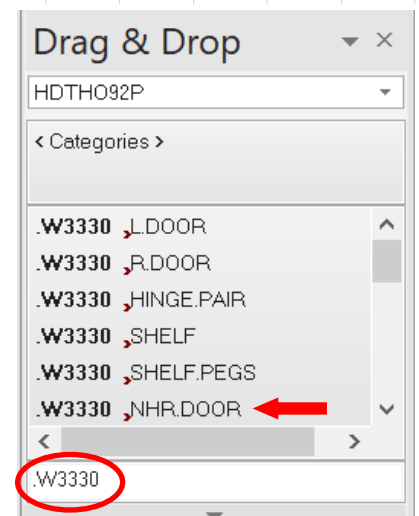
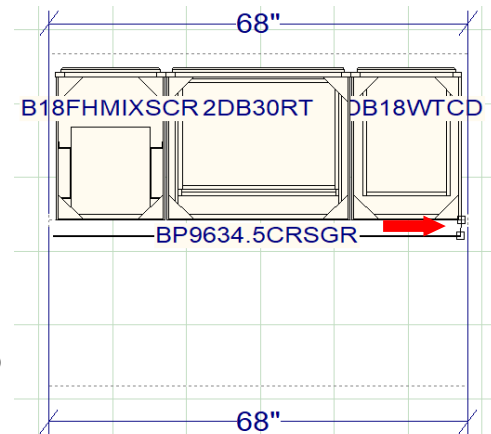
I would use 4 doors from a W3330 to cover the back of this panel by typing in .W3330. You can select left or right hinge or NHR (no hinge route). If you needed corbels because of an overhang, 3 evenly spaced fillers with corbels applied to the fillers would change the sizes of the doors needed to fit between the fillers.

You can use this same method to place Wainscot panels, sizing before attaching to the backs of your Island.

Double-Clicking in the placement zones in front of and in back of the island will generate the needed elevations for your customer and installer.

**It's that Easy!**

**Thomasville, We Are Home Depot!**



*Thomasville Cabinetry  
Available only at Home Depot!  
We are Home Depot!*

