

Thomasville¹⁹⁰⁴ Studio

CABINETRY

Visit us at thomasvillecabinetry.com

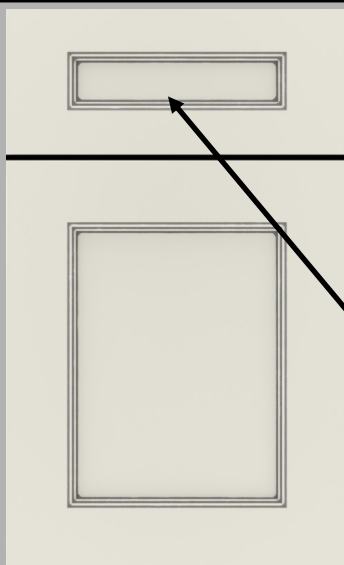
or

<https://www.THAND.com>

January 2022 Training Agenda

MASTER BRAND
CABINETS, INC.

Knox Painted - Swan w/Carrara



Knox

Transitional door gives your customer another alternative to the tired old Shaker!

Optional 5 pc Drawer Front Available

Flooded Glaze gives each door a unique random finish.



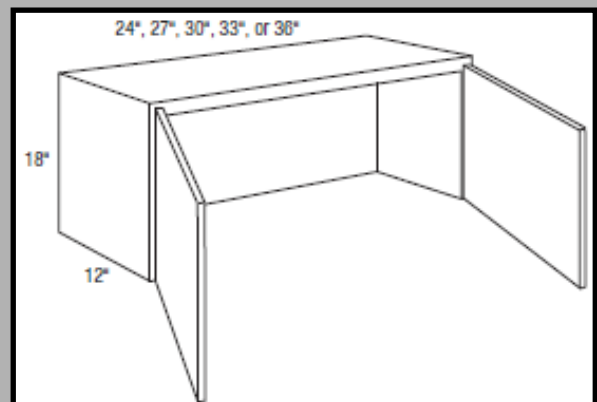
Full Overlay
\$205 LF-Painted
\$205 LF-Maple

Pg. 16

Wall Appliance Garage Door Butt Doors

WAGD__

- Available 24" and now **NEW Widths** 27", 30", 33", & 36"
- Cabinet does not have a floor.
- Available in square door styles only.
- Trim height will be restricted when AUTHB, AUTHL, or AUTHR is selected.



Pg. 136

TH&A

Todd Haley & Associates

Adam Johnson
678-736-9934

ajohnson@toddhaley.com

Ginny Edens
770-424-7518

gedens@toddhaley.com

Paul Cunningham
615-681-2686

pcunningham@toddhaley.com

Thomas D. Clarke, CKD
225-240-0529

tclarke@toddhaley.com



Thomasville Studio 1904

a modern, vintage vibe cabinetry offering that is exclusive to Home Depot!

Thomasville Studio 1904
CABINETRY



Things I Love About Studio!

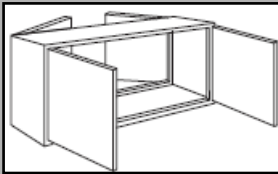
Len Frederick HD_0375 Denham Springs, La.

“Studio has the same Great quality that you find in Classic at an Entry Level Price Point!”

“When I told my wife she drew her eyebrows to high, she looked surprised.” ~ unknown

Modifications

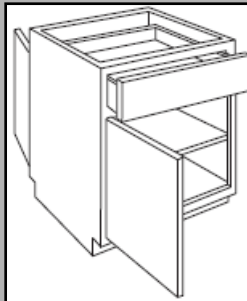
P - peninsula



Wall cabinets

Pg. 67

Base cabinets

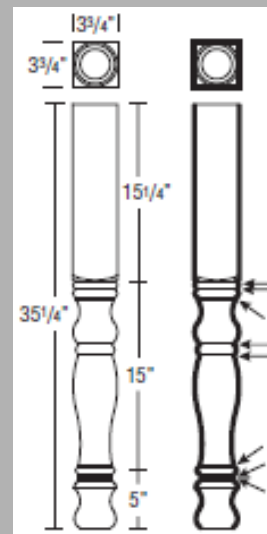


Most wall and base cabinets. Creates a peninsula cabinet that is 1/4" deeper than the standard cabinet depth. If ID or RD is specified, cabinet will be 1/4" deeper than specified cabinet depth. Any adjustable shelves are upgraded to full depth. Peninsula cabinets are available with ADDTK 15" deep and larger. Any cabinet with a toe kick must be at least 15" deep. Depths of 14" and less will not have ADDTK available. Single door cabinets are hinged on the same cabinet end, for example a W1230L will feature a Left hinge on the front side and a Right hinge on the peninsula side. Not available on tall cabinets including oven, utility, and pantry; multi-drawer base cabinets. Cabinets with drawers can only be reduced in 3" increments. Base cabinets with drawer modified to Peninsula will include a false drawer panel on the back side, and working doors. Peninsula cabinets are not designed to be used as stand alone island cabinets.

Embellishments

English Country Leg

JENGCONTYLEG



- Trimmable.
- See page 409 for ordering guidelines.
- Finished edges indicated by bold lines on side view drawing. Glazed edges indicated by arrows on side view drawing.

Pg. 451

Thank you for selling your House Brand, Thomasville Cabinetry! We are your partners to help you with the sale every time! Visit your web page <https://www.THAHD.com>

TH&A

Todd Haley & Associates



MASTERBRAND
CABINETS, INC.