

# *Thomasville*<sup>®</sup>

CABINETS



## ElementsCollection

EFFECTIVE DECEMBER 2021

Supersedes all prior versions

DESIGNER SPECIFICATION GUIDE

# Elements Collection

Your Elements Collection user experience is our priority. The Elements Collection Designer Specification Guide features hyperlink navigation, so you can quickly locate product specific to your project.

- The Indexes contain links to each unique product.
- The main Table of Contents contains links to the beginning of each section.
- The secondary Table of Contents at the beginning of each section contains links to product subcategories.
- Return to the beginning of each section by clicking on the title inside the black tab.
- Return to the main Table of Contents at any time by clicking on Elements Collection at the bottom of each page.

If your preferred PDF search method is holding the Control and F keys and populating the search box with item codes or words, we've got you covered.

No matter how you choose to use this resource, we're glad you're specifying Elements Collection!

## TABLE OF CONTENTS

Index by Description .....	2
Index by Code .....	3
Policies and Procedures .....	4-5
Door Styles .....	6
Product Specifications .....	7-12
Wall Cabinets .....	13-32
Base Cabinets .....	34-44
Universal Access Cabinets .....	45-50
Tall Cabinets .....	51-55
Vanity Cabinets .....	56-59
Fillers .....	60-62
Skins .....	63-64
Panels .....	65-66
Mouldings .....	68-74
Accessories .....	75-79
Hinges .....	80-82

Description	Code	Page	Description	Code	Page
3" Filler	F3_ _, TF396FH	61	Hinge Shim	HINGESHIM5	82
6" Filler	F6_ _, TF696FH	62	Mini Touch-up Kit	MTUK	79
Accent Moulding, Flat Scribe	SM8	70	Partial Overlay Hinge	38NPOHINGE	80
Accent Moulding, Light Baffle	LB2	71	Roll Tray Kits	RT_ _WD	76
Accent Moulding, Small Scribe	SSM8	71	Single Oven Three Drawers	OC3D33_ _24	55
Angled Corner Sink Front Bottom	ACSF	41	Sink Base	SB	40
Angled Corner Sink Front without Sink Floor	ACSF	41	Stain & Paint	QUARTCOLOR, SSC	79
Base and Tall Panels with Filler Attached	BEPF1.5LAM, BEPF3LAM, TEP2496F1.5, TEP3096F1.5	66	Starter Moulding, Shaker	STRS8	70
Base Built-in Microwave Cabinet with Drawer	BBMWD	39	Straight Valance / Baseboard	VV_ _	74
Base Corner Single Door	BC_ _S	42	Super Lazy Susan	SLS36R	43
Base Decorative Door End Panel Kit, Single Door	BEDSD	67	Tall End Panels	TEP2484LAM, TEP2496LAM, TEP3096LAM	65
Base Double Door	B	36	Three Drawer Base	3DB	38
Base Double Door - Full Height	B_ _FH	37	Tilt-out Trays	TOT_ _	77
Base Easy Reach	BER_ _R	43	Toeboard	TB8LAM18, TB8LAM14	73
Base Lazy Susan	BLS36R	44	Touch-up Kit	TUK	79
Base Single Door	B_ _R	35	Two Drawer Base	2DB	37
Base Single Door - Full Height	B_ _FHR	36	Universal Access, Base Corner Single Door	BC_ _32.5S	49
Base Wastebasket	BWB	39	Universal Access, Base Double Door	B_ _32.5	47
Bumper Pads	BUMPERPADS	77	Universal Access, Base Single Door	B_ _32.5R	46
Corner Moulding, Inside Corner	ICM8	72	Universal Access, Base Sink Removable	BSR_ _32.5	48
Corner Moulding, Outside Corner	OCM8	72	Universal Access, Sink Base	SB_ _32.5	48
Corner Moulding, Quarter Round	QRM	73	Universal Access, Super Lazy Susan	SLS3632.5R	50
Country Sink Base	CNTYSB	40	Universal Access, Three Drawer Base	3DB_ _32.5	47
Crown Moulding, Cove Crown	COVECROWN8	69	Utility Double Door	U24_ _24	53
Crown Moulding, Small Cove Crown	SMCOVECROWN8	69	Utility Single Door	U18_ _24R	52
Crown Moulding, Solid Wood Crown	SWCRM8	68	Vanity Base Single Door	VB_ _3421R	58
Crown Moulding, Solid Wood Large Crown	SWLCRM8	68	Vanity Drawer Base	VDB_ _32.521	57
Diagonal Wall	DW_ _ _ _ _R	32	Vanity Drawer Base	VDB_ _3421	58
Diagonal Wall Cut-for-glass	DWCG	33	Vanity Sink Base	VSB_ _32.521	57
Drawer Guide Kits	DGK_ _PG	78	Vanity Sink Base	VSB_ _3421	59
End Panel Skins	WEPS42LAM14, BEPS34.514, TEP596LAM14	63	Vanity Sink Drawer Base	2VSD_ _3421	59
Finished Back Skins	BP4834.514, BP4896LAM14	64	Wall Corner Double Door	WC_ _ _ _S	30
Full Overlay Hinge, 4-way	38BFOVHINGE	81	Wall Corner Single Door	WC_ _ _ _S	29
Full Overlay Hinge, 6-way	38CFOHINGE	80	Wall Cut-for-glass	WCG	24
Hinge Angle Restriction Clip	HINGERESCLIP	81	Wall Decorative Door End Panel Kit	WED	67
			Wall Double Door	W	14
			Wall Single Door	W_ _ _ _R	15

Code	Description	Page	Code	Description	Page
<b>2DB</b>	Two Drawer Base	37	<b>OCM8</b>	Corner Moulding, Outside Corner	72
<b>2VSD__3421</b>	Vanity Sink Drawer Base	59	<b>QRM</b>	Corner Moulding, Quarter Round	73
<b>38BFOVHINGE</b>	Full Overlay Hinge, 4-way	81	<b>QUARTCOLOR</b>	Stain & Paint	79
<b>38CFOHINGE</b>	Full Overlay Hinge, 6-way	80	<b>RT__WD</b>	Roll Tray Kits	76
<b>38NPOHINGE</b>	Partial Overlay Hinge	80	<b>SB</b>	Sink Base	40
<b>3DB</b>	Three Drawer Base	38	<b>SB__32.5</b>	Universal Access, Sink Base	48
<b>3DB__32.5</b>	Universal Access, Three Drawer Base	47	<b>SLS3632.5R</b>	Universal Access, Super Lazy Susan	50
<b>ACSF</b>	Angled Corner Sink Front without Sink Floor	41	<b>SLS36R</b>	Super Lazy Susan	43
<b>ACSFb</b>	Angled Corner Sink Front Bottom	41	<b>SM8</b>	Accent Moulding, Flat Scribe	70
<b>B</b>	Base Double Door	36	<b>SMCOVECROWN8</b>	Crown Moulding, Small Cove Crown	69
<b>B__32.5</b>	Universal Access, Base Double Door	47	<b>SSC</b>	Stain & Paint	79
<b>B__32.5R</b>	Universal Access, Base Single Door	46	<b>SSM8</b>	Accent Moulding, Small Scribe	71
<b>B__FH</b>	Base Double Door - Full Height	37	<b>STRS8</b>	Starter Moulding, Shaker	70
<b>B__FHR</b>	Base Single Door - Full Height	36	<b>SWCRM8</b>	Crown Moulding, Solid Wood Crown	68
<b>B__R</b>	Base Single Door	35	<b>SWLCRM8</b>	Crown Moulding, Solid Wood Large Crown	68
<b>BC__32.5S</b>	Universal Access, Base Corner Single Door	49	<b>TB8LAM14</b>	Toeboard	73
<b>BC__S</b>	Base Corner Single Door	42	<b>TB8LAM18</b>	Toeboard	73
<b>BBMWD</b>	Base Built-in Microwave Cabinet with Drawer	39	<b>TEP2484LAM</b>	Tall End Panel	65
<b>BEDSD</b>	Base Decorative Door End Panel Kit, Single Door	67	<b>TEP2496F1.5</b>	Tall Panel with Filler Attached	66
<b>BEPF1.5LAM</b>	Base Panel with Filler Attached	66	<b>TEP2496LAM</b>	Tall End Panel	65
<b>BEPF3LAM</b>	Base Panel with Filler Attached	66	<b>TEP3096F1.5</b>	Tall Panel with Filler Attached	66
<b>BEPS34.514</b>	End Panel Skins	63	<b>TEP3096LAM</b>	Tall End Panel	65
<b>BER__R</b>	Base Easy Reach	43	<b>TEPS96LAM14</b>	End Panel Skins	63
<b>BLS36R</b>	Base Lazy Susan	44	<b>TF396FH</b>	3" Filler, Tall	61
<b>BP4834.514</b>	Finished Back Skins	64	<b>TF696FH</b>	6" Filler, Tall	62
<b>BP4896LAM14</b>	Finished Back Skins	64	<b>TOT__</b>	Tilt-out Trays	77
<b>BSR__32.5</b>	Universal Access, Base Sink Removable	48	<b>TUK</b>	Touch-up Kit	79
<b>BUMPERPADS</b>	Bumper Pads	77	<b>U18__24R</b>	Utility Single Door	52
<b>BWB</b>	Base Wastebasket	39	<b>U24__24</b>	Utility Double Door	53
<b>CNTYSB</b>	Country Sink Base	40	<b>VB__3421R</b>	Vanity Base Single Door	58
<b>COVECROWN8</b>	Crown Moulding, Cove Crown	69	<b>VDB__32.521</b>	Vanity Drawer Base	57
<b>DGK__PG</b>	Drawer Guide Kits	78	<b>VDB__3421</b>	Vanity Drawer Base	58
<b>DW_____R</b>	Diagonal Wall	32	<b>VSB__32.521</b>	Vanity Sink Base	57
<b>DWCG</b>	Diagonal Wall Cut-for-glass	33	<b>VSB__3421</b>	Vanity Sink Base	59
<b>F3__</b>	3" Filler	61	<b>VV__</b>	Straight Valance / Baseboard	74
<b>F6__</b>	6" Filler	62	<b>W</b>	Wall Double Door	14
<b>HINGERESCLIP</b>	Hinge Angle Restriction Clip	81	<b>W__R</b>	Wall Single Door	15
<b>HINGESHIM5</b>	Hinge Shim	82	<b>WC____S</b>	Wall Corner Double Door	30
<b>ICM8</b>	Corner Moulding, Inside Corner	72	<b>WC____S</b>	Wall Corner Single Door	29
<b>LB2</b>	Accent Moulding, Light Baffle	71	<b>WCG</b>	Wall Cut-for-glass	24
<b>MTUK</b>	Mini Touch-up Kit	79	<b>WED</b>	Wall Decorative Door End Panel Kit	67
<b>OC3D33__24</b>	Single Oven Three Drawers	55	<b>WEPS42LAM14</b>	End Panel Skins	63

# HOME DELIVERY PROGRAM - GUIDELINES

- Home deliveries will be completed to the consumer Monday through Friday between the hours of 8:00 a.m. and 8:30 p.m. and Saturday from 8:00 a.m. to 4:30 p.m. Deliveries can be scheduled as early as 7:00 a.m. if requested. Restrictions on truck traffic during certain times may apply, which will require consideration on setting appointment times.
- The home delivery agent will contact the consumer within three business days of purchase to schedule a delivery date. The consumer will be contacted again the day prior to scheduled delivery. At confirmation, a four hour delivery window will be set up.
- An adult (age 18 or older) must be present at the time of delivery. The consumer will be contacted within an hour prior to arrival. It will be considered a no-show or refusal if the consumer is not present at the time of scheduled delivery. The delivery team will wait 15 minutes prior to departing. Re-delivery charges may apply.
- For orders of 10 or more cabinets we recommend that you do not open the boxes. Please wait for your installer in order to avoid damaging the cabinets. If the installer finds any damages which were not visible at time of delivery, please contact your customer service representative.
- The delivery vehicle size is a standard sized box truck that is about 30' long, 13' tall, and 9' wide. Most of the time these trucks will be weighted at 22,000 pounds DVW (Declared Vehicle Weight), but some trucks will be DVW at 26,000 pounds.
- Space has to be cleared and ready for delivery prior to driver team arrival (driver teams are not allowed to move personal belongings).
- Driver teams will consist of at least two people.
- Opening and inspecting cabinets will take place after delivery team leaves; the consumer is only signing for visual damage to cartons upon delivery.

## DISCONTINUED PRODUCT POLICY

Product will no longer be available for order after the discontinuation date. Only warranty orders will be considered. Even with warranty orders we will have the option to replace customer's defective product with the same discontinued product they originally purchased or replace all doors originally ordered with a current product that is similar in appearance.

# CABINET RETURN POLICY - AT A GLANCE

## For misordered products and cancellations:

- Returnable? NO
- New Purchase Order? YES
- Cancellation? NO
- Amount of Credit? 0%

## For damaged, defective, or incorrectly shipped products:

- Returnable? NO
- New Purchase Order? NO
- Cancellation Charge? NO
- Amount of Credit? 100%\*
- Re-delivery Charge? NO

## Ordered something wrong?

- No changes to original purchase order allowed. Must submit a new purchase order.
- New purchase order number required for misordered product.

## Received a damaged, defective or incorrectly shipped product?

- Please contact Customer Service to reorder damaged, defective or incorrectly shipped product.
- No new purchase order is required.

## Remind your consumers to inspect all cabinets immediately upon arrival.

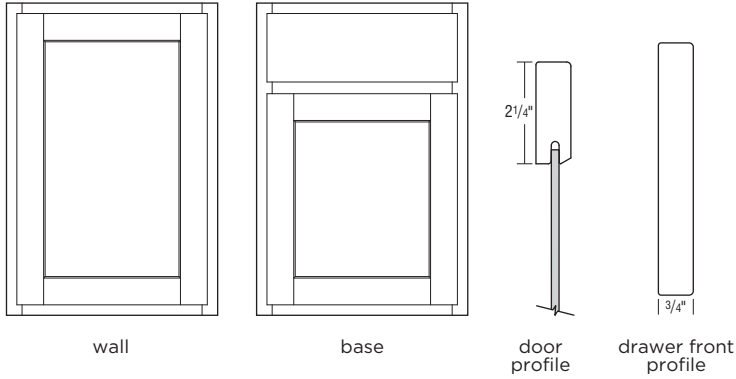
- Cartons showing visible damage should be noted on the delivery paperwork.
- Do not return product on your own.
- Time limit for contacting Customer Service regarding any problems is 90 days from invoice.

\*Thomasville Cabinetry must be given the opportunity to replace or correct shipped products. If returned in error, credit will not be issued.

# DOOR STYLES

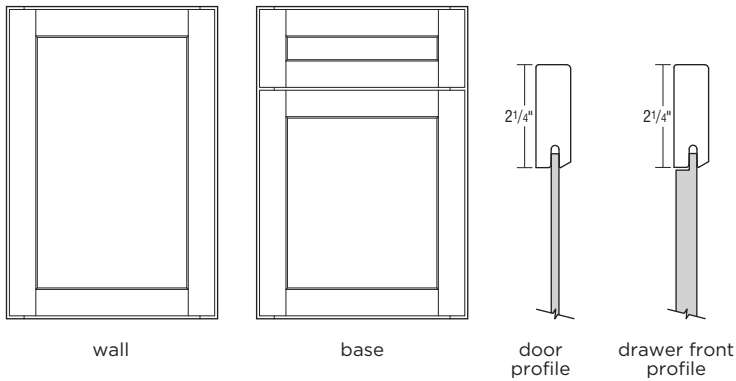
## COSTELLO PARTIAL

Partial Overlay • Shaker • 2 1/4" Rail • Veneer Center Panel • Slab Drawer Front  
 • Available in Trestle and White



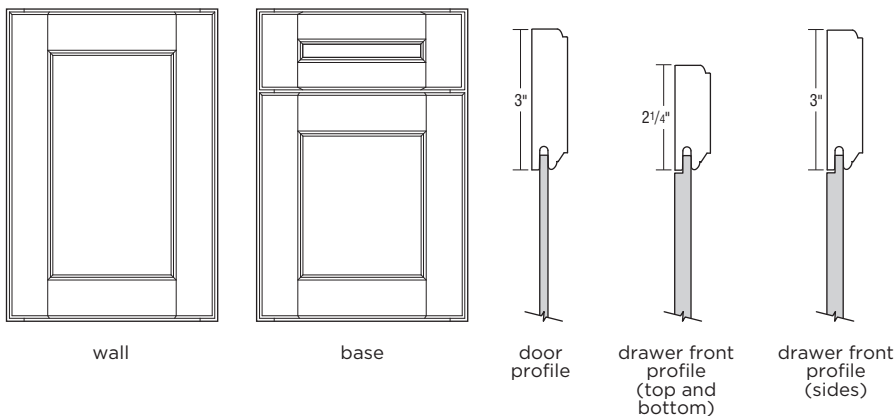
## COSTELLO FULL

Full Overlay • Shaker • 2 1/4" Rail • Veneer Center Panel • 5-piece Drawer Front  
 • Available in Sterling, Trestle, and White

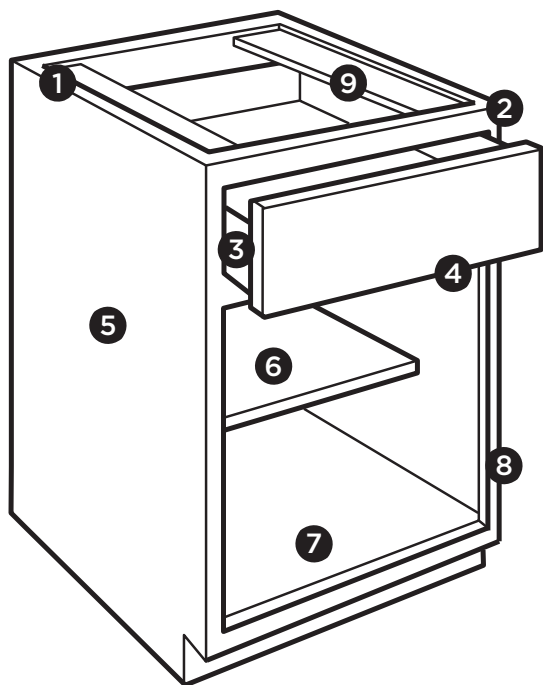


## EVERLY

Full Overlay • Transitional • 3" Rail • Veneer Center Panel • 5-piece Drawer Front  
 • Available in Sterling and White



# PRODUCT SPECIFICATIONS



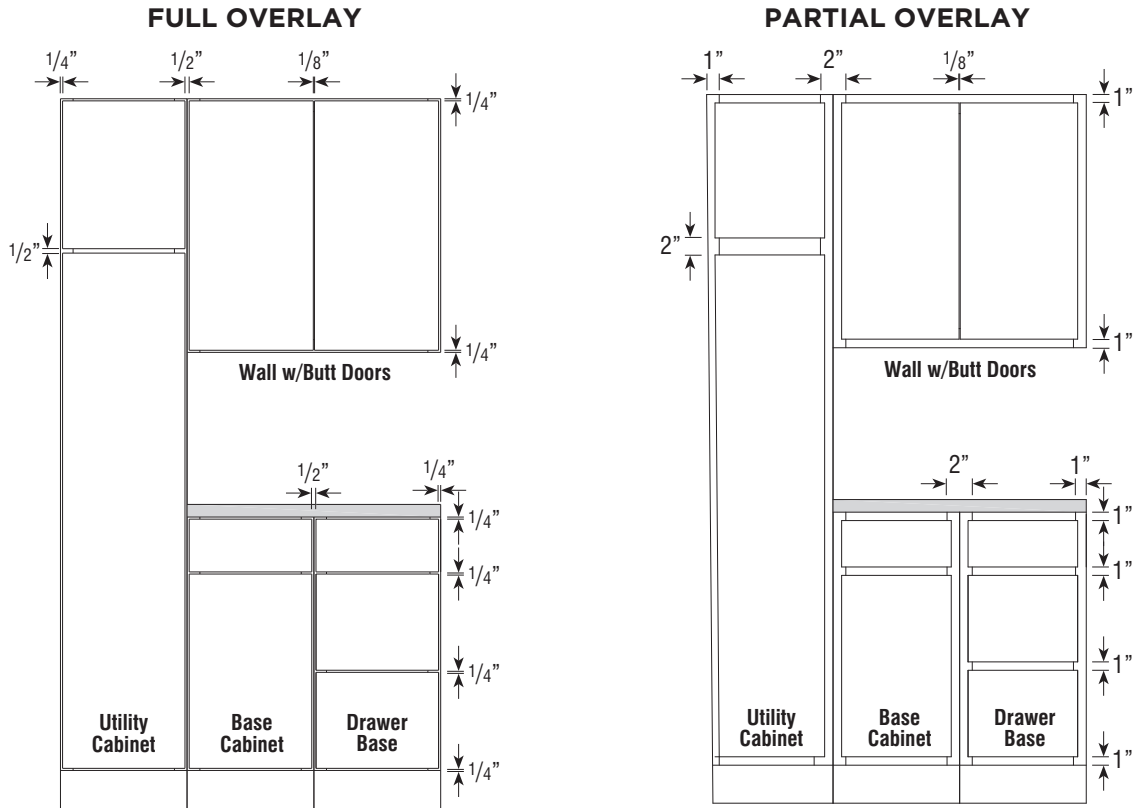
- 1 1/2" Plywood ends, 3/8" Plywood top, back, and bottom
- 2 3/4" Hardwood frame, doors and drawer fronts
- 3 5/8" Solid wood dovetail drawer box
- 4 QuietClose, undermount, full extension drawer guides
- 5 Matching exterior
- 6 3/4" Natural Plywood adjustable shelves
- 7 Natural interior
- 8 QuietClose, 6-way adjustable hinges
- 9 3/8" Plywood I-beam braces

Cabinet Care and Cleaning Instructions:  
<https://www.masterbrand.com/care-and-cleaning>

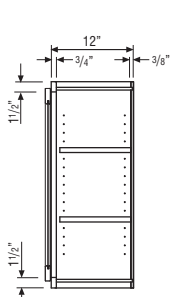
For warranty information, visit: [thomasvillecabinetry.com/warranty](http://thomasvillecabinetry.com/warranty)

In keeping with our practice of continuous product improvement and/or to maximize efficiencies, Thomasville Cabinetry may adjust specifications in design and materials as it deems necessary. Where differing materials are utilized, they will be of similar or better quality in keeping with Thomasville Cabinetry's commitment to quality.

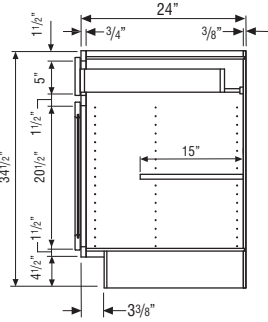
# FULL AND PARTIAL OVERLAY SPECIFICATIONS



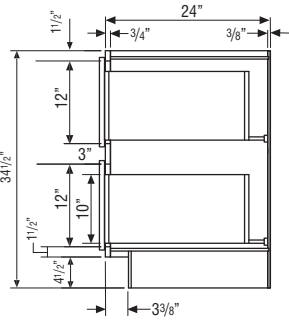
# CABINET DIMENSIONS



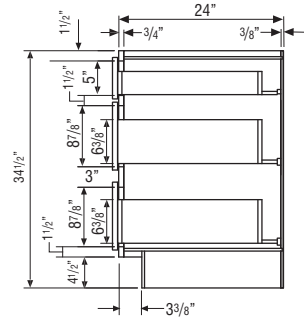
**WALL CABINET**



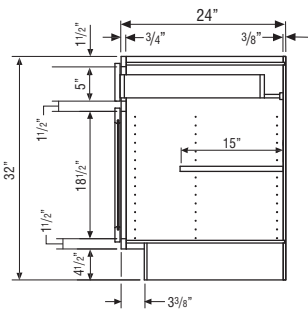
**BASE CABINET**



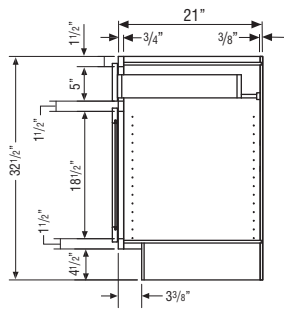
**TWO-DRAWER  
BASE CABINET**



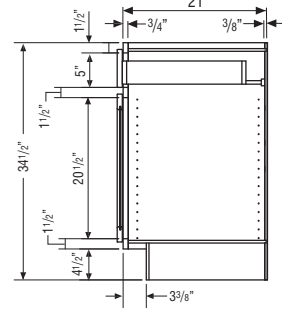
**THREE-DRAWER  
BASE CABINET**



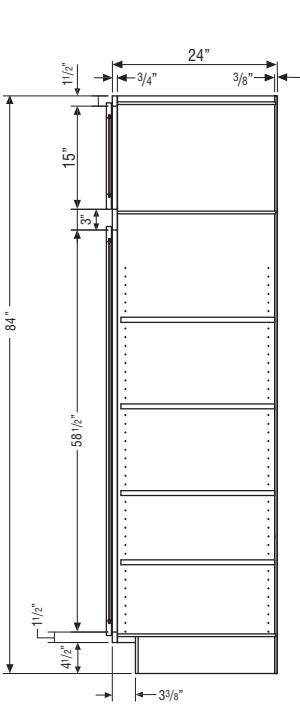
**32 1/2" HIGH  
BASE CABINET**



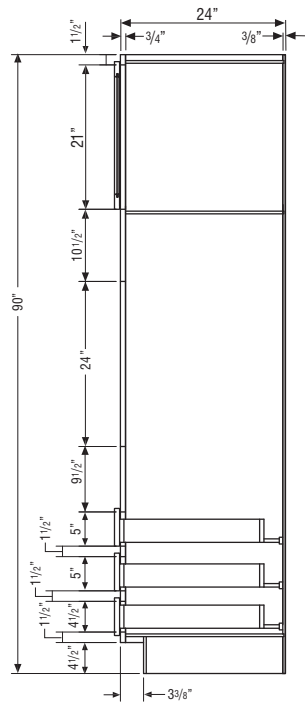
**32 1/2" HIGH  
VANITY CABINET**



**34 1/2" HIGH  
VANITY CABINET**



**UTILITY CABINET**

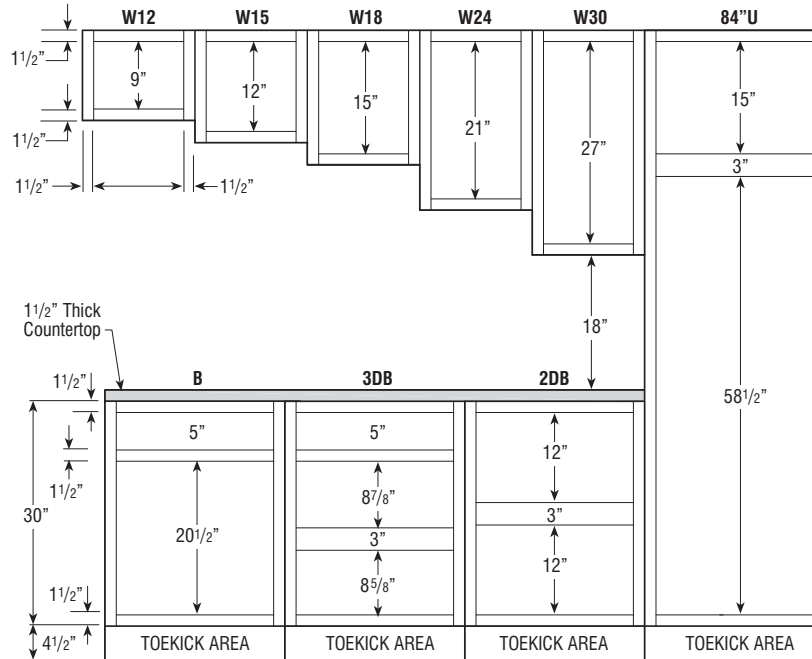


**OC3D CABINET**

# CABINET DIMENSIONS

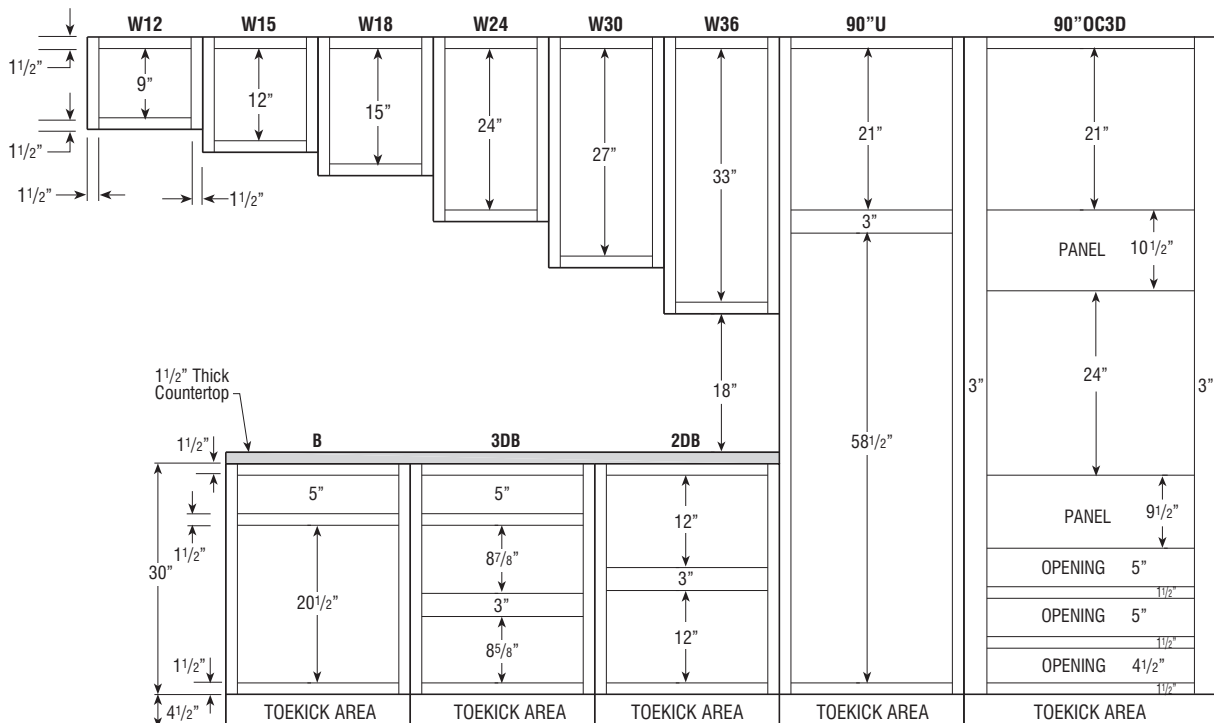
## 84" HIGH APPLICATION

Number after Wall Cabinet Represents Height of Cabinet



## 90" HIGH APPLICATION

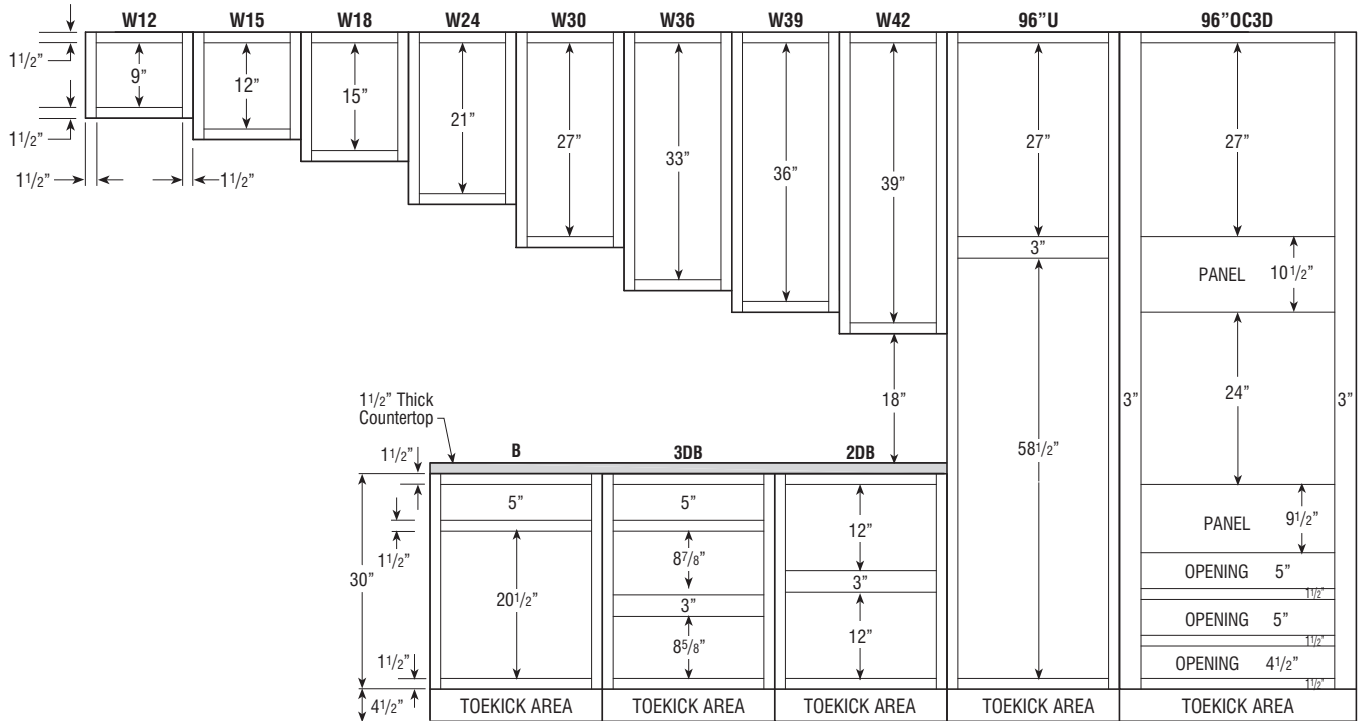
Number after Wall Cabinet Represents Height of Cabinet



# CABINET DIMENSIONS

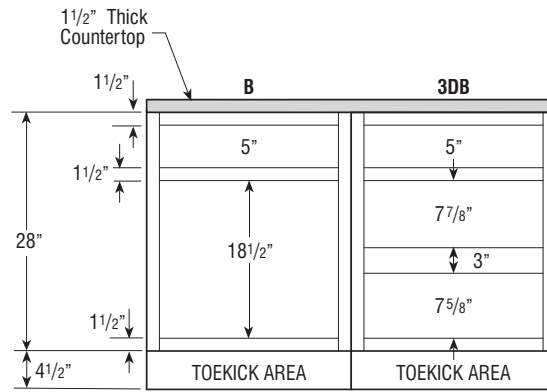
## 96" HIGH APPLICATION

Number after Wall Cabinet Represents Height of Cabinet

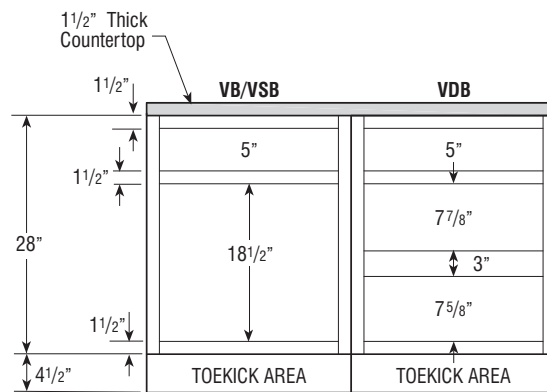


# CABINET DIMENSIONS

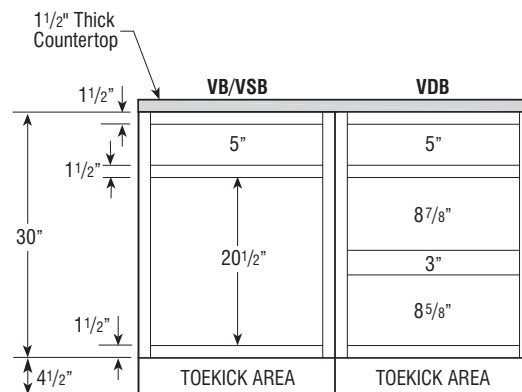
## 32 1/2" HIGH BASE CABINETS



## 32 1/2" HIGH VANITY CABINETS



## 34 1/2" HIGH VANITY CABINETS



## TABLE OF CONTENTS - WALL CABINETS



### **12" Deep Wall**

12" High .....	.14
15" High .....	.14
18" High .....	.15
24" High .....	.15
30" High .....	.16
36" High .....	.18
39" High .....	.20
42" High .....	.22

### **12" Deep Wall Cut-for-glass**

30" High .....	.24
36" High .....	.25
42" High .....	.26

### **24" Deep Wall**

12" High .....	.27
18" High .....	.28
24" High .....	.28

### **12" Deep Wall Corner**

30" High .....	.29
36" High .....	.30
39" High .....	.31
42" High .....	.31

### **12" Deep Diagonal Wall**

30" High .....	.32
36" High .....	.32
42" High .....	.32

### **12" Deep Diagonal Wall Cut-for-glass**

30" High .....	.33
36" High .....	.33
42" High .....	.33

## WALL DOUBLE DOOR

12" High

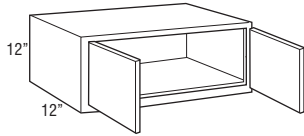
12" Deep

Model

W3012

W3312

W3612



## WALL DOUBLE DOOR

15" High

12" Deep

Model

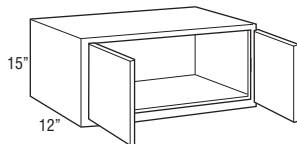
W2415 new

W3015

W3315

W3615

- W2415 not available in Costello Partial Trestle and Costello Full Trestle.



## WALL DOUBLE DOOR

18" High

12" Deep

Model

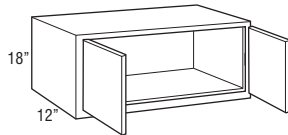
W2418 **new**

W3018

W3318

W3618

- W2418 not available in Costello Partial Trestle and Costello Full Trestle.



## WALL SINGLE DOOR

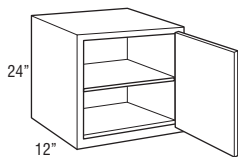
24" High

12" Deep

Model

W2124R

- Cabinet hinged on the right; may be flipped for left hinge application.



## WALL DOUBLE DOOR

24" High

12" Deep

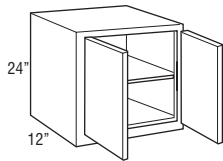
Model

W2424

W3024

W3324

W3624



## WALL SINGLE DOOR

30" High

12" Deep

Model

W930R

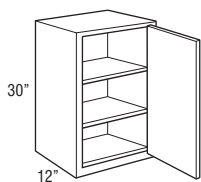
W1230R

W1530R

W1830R

W2130R

- Cabinet hinged on the right; may be flipped for left hinge application.



# WALL DOUBLE DOOR

30" High

12" Deep

Model

W2430

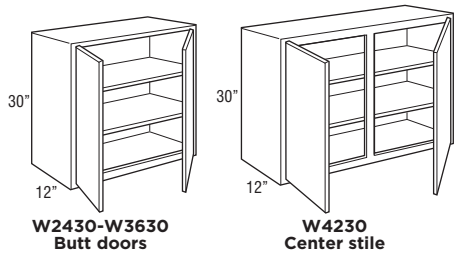
W2730

W3030

W3330

W3630

W4230



**WALL SINGLE DOOR**

36" High

12" Deep

---

Model

---

W936R

---

W1236R

---

W1536R

---

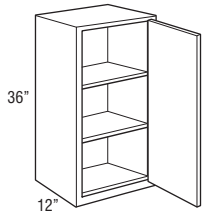
W1836R

---

W2136R

---

- Cabinet hinged on the right; may be flipped for left hinge application.



# WALL DOUBLE DOOR

36" High

12" Deep

Model

W2436

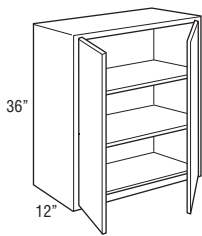
W2736

W3036

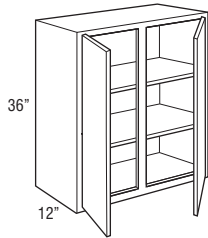
W3336

W3636

W4236



**W2436-W3636**  
Butt doors



**W4236**  
Center stile

## WALL SINGLE DOOR

39" High

12" Deep

---

Model

---

W939R new

---

W1239R new

---

W1539R new

---

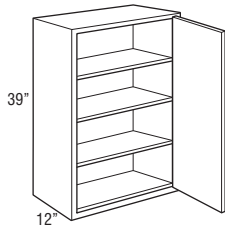
W1839R new

---

W2139R new

---

- Cabinet hinged on the right; may be flipped for left hinge application.
- Not available in Costello Partial Trestle and Costello Full Trestle.



# WALL DOUBLE DOOR

39" High

12" Deep

Model

W2439 new

W2739 new

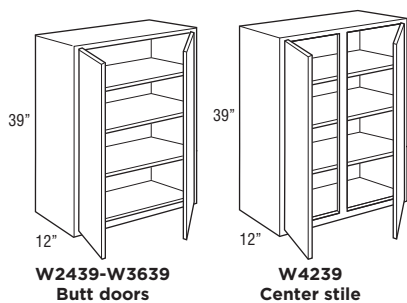
W3039 new

W3339 new

W3639 new

W4239 new

• Not available in Costello Partial Trestle and Costello Full Trestle.



**WALL SINGLE DOOR**

42" High

12" Deep

---

Model

---

W942R

---

W1242R

---

W1542R

---

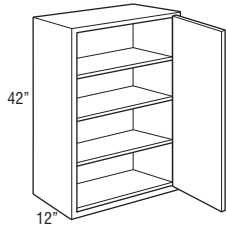
W1842R

---

W2142R

---

- Cabinet hinged on the right; may be flipped for left hinge application.



# WALL DOUBLE DOOR

42" High

12" Deep

Model

W2442

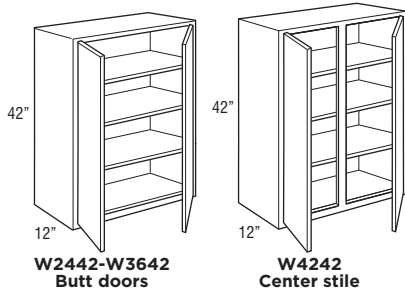
W2742

W3042

W3342

W3642

W4242



## WALL CUT-FOR-GLASS CABINETS

RECOMMENDED GLASS SIZE FOR WALL CABINET DOORS			
SKU	Costello Full Door Size	Door Route Size	Glass Size
WCG1530R	14 1/2" x 29 1/2"	11 1/4" x 26 1/4"	11 1/16" x 26 1/16"
WCG1830R	17 1/2" x 29 1/2"	14 1/4" x 26 1/4"	14 1/16" x 26 1/16"
WCG3030	14 11/16" x 29 1/2"	11 7/16" x 26 1/4"	11 1/4" x 26 1/16"
WCG3630	17 11/16" x 29 1/2"	14 7/16" x 26 1/4"	14 1/4" x 26 1/16"
WCG1536R	14 1/2" x 35 1/2"	11 1/4" x 32 1/4"	11 1/16" x 32 1/16"
WCG1836R	17 1/2" x 35 1/2"	14 1/4" x 32 1/4"	14 1/16" x 32 1/16"
WCG3036	14 11/16" x 35 1/2"	11 7/16" x 32 1/4"	11 1/4" x 32 1/16"
WCG3636	17 11/16" x 35 1/2"	14 7/16" x 32 1/4"	14 1/4" x 32 1/16"
WCG1542R	14 1/2" x 41 1/2"	11 1/4" x 38 1/4"	11 1/16" x 38 1/16"
WCG1842R	17 1/2" x 41 1/2"	14 1/4" x 38 1/4"	14 1/16" x 38 1/16"
WCG3042	14 11/16" x 41 1/2"	11 7/16" x 38 1/4"	11 1/4" x 38 1/16"
WCG3642	17 11/16" x 41 1/2"	14 7/16" x 38 1/4"	14 1/4" x 38 1/16"

\*Recommended glass size dimensions are 3/16" smaller than glass route.

### WALL CUT-FOR-GLASS

30" High

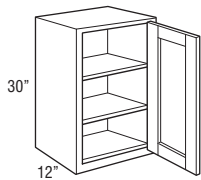
12" Deep

Model

WCG1530R new

WCG1830R new

- Cabinet hinged on the right; may be flipped for left hinge application.
- Glass not included.
- Cabinets will have matching interior.
- Available in Costello Full Sterling and White.



## WALL CUT-FOR-GLASS

30" High

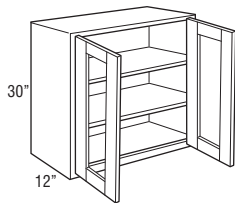
12" Deep

Model

WCG3030 new

WCG3630 new

- Glass not included.
- Cabinets will have matching interior.
- Available in Costello Full Sterling and White.



## WALL CUT-FOR-GLASS

36" High

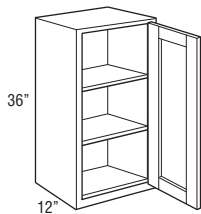
12" Deep

Model

WCG1536R new

WCG1836R new

- Cabinet hinged on the right; may be flipped for left hinge application.
- Glass not included.
- Cabinets will have matching interior.
- Available in Costello Full Sterling and White.



**WALL CUT-FOR-GLASS**

36" High

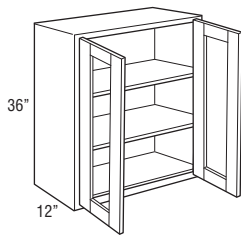
12" Deep

Model

WCG3036 new

WCG3636 new

- Glass not included.
- Cabinets will have matching interior.
- Available in Costello Full Sterling and White.

**WALL CUT-FOR-GLASS**

42" High

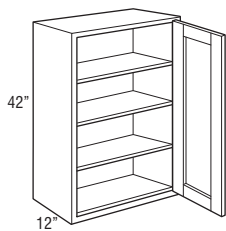
12" Deep

Model

WCG1542R new

WCG1842R new

- Cabinet hinged on the right; may be flipped for left hinge application.
- Glass not included.
- Cabinets will have matching interior.
- Available in Costello Full Sterling and White.



**WALL CUT-FOR-GLASS**

42" High

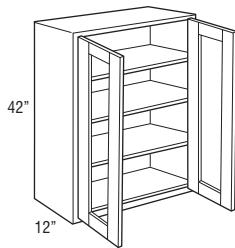
12" Deep

Model

WCG3042 new

WCG3642 new

- Glass not included.
- Cabinets will have matching interior.
- Available in Costello Full Sterling and White.

**WALL DOUBLE DOOR**

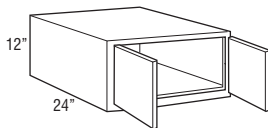
12" High

24" Deep

Model

W361224

- 24" deep cabinets must be supported on three surfaces when mounted.
- Load limit is 15 lbs. per square foot of load bearing surface.



## WALL DOUBLE DOOR

18" High

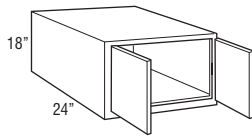
24" Deep

Model

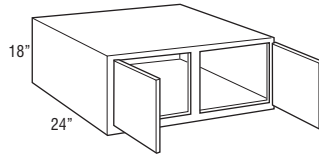
W361824

W391824

- 24" deep cabinets must be supported on three surfaces when mounted.
- Load limit is 15 lbs. per square foot of load bearing surface.



**W361824**  
Butt doors



**W391824**  
Center stile

## WALL DOUBLE DOOR

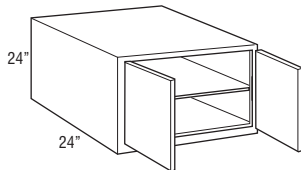
24" High

24" Deep

Model

W362424

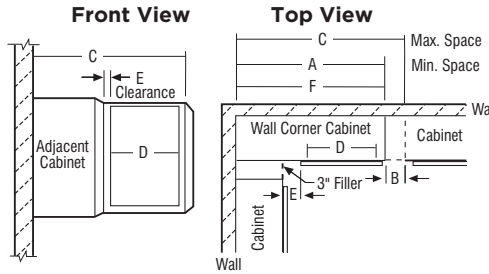
- 24" deep cabinets must be supported on three surfaces when mounted.
- Load limit is 15 lbs. per square foot of load bearing surface.



# WALL CORNER CABINETS

SKU	A Min. Space	B Max. Pull	C Max. Space	D Cabinet Opening	E Full Overlay		E Partial Overlay		F Actual Cabinet
					At Min.	At Max.	At Min.	At Max.	
WC30...	30"	5"	35"	13 1/2"	1 3/4"	6 3/4"	2 1/2"	7 1/2"	30"
WC36...	36"	5"	41"	19 1/2"	1 3/4"	6 3/4"	2 1/2"	7 1/2"	36"
WC42...	42"	4 1/2"	46 1/2"	24"	3 1/4"	7 3/4"	4"	8 1/2"	42"

- Wall corner cabinets may be installed flush to the wall (left) or pulled 3" away from wall (right) to accommodate add dimensions in a kitchen design. In either case, the adjoining run of 12" wall cabinets plus a 3" filler will butt against the solid-wood panel.
- When a cabinet is "pulled" it will use proportionally more space, for example, a 30" wide WC, pulled 2" will use 32" of space.
- Blind side of wall corner cabinets cannot be installed next to a range hood unit due to door interference.



**NOTE:**  
All outside stiles are 1 1/2" wide

## WALL CORNER SINGLE DOOR

30" High

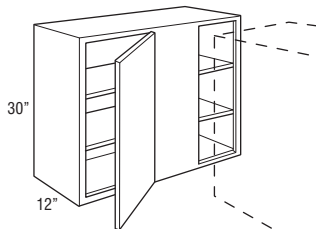
12" Deep

Model

WC3030S

WC3630S

- Right blind shown; cabinet may be flipped for left blind application.
- Filler required for installation. Must be ordered separately.



**WALL CORNER DOUBLE DOOR**

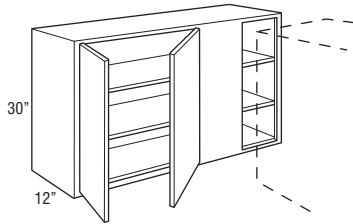
30" High

12" Deep

Model

WC4230S

- Right blind shown; cabinet may be flipped for left blind application.
- Filler required for installation. Must be ordered separately.

**WALL CORNER SINGLE DOOR**

36" High

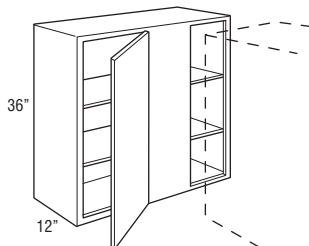
12" Deep

Model

WC3036S

WC3636S

- Right blind shown; cabinet may be flipped for left blind application.
- Filler required for installation. Must be ordered separately.



## WALL CORNER SINGLE DOOR

39" High

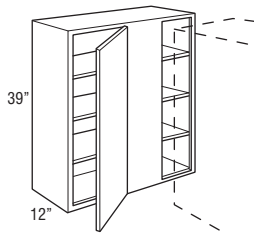
12" Deep

Model

WC3039S *new*

WC3639S *new*

- Right blind shown; cabinet may be flipped for left blind application.
- Filler required for installation. Must be ordered separately.
- Not available in Costello Partial Trestle and Costello Full Trestle.



## WALL CORNER SINGLE DOOR

42" High

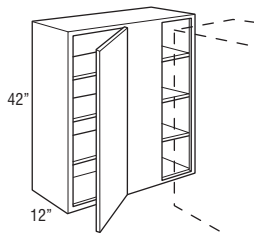
12" Deep

Model

WC3042S

WC3642S

- Right blind shown; cabinet may be flipped for left blind application.
- Filler required for installation. Must be ordered separately.



**DIAGONAL WALL**

30" High

36" High

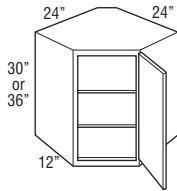
12" Deep

Model

DW302424R

DW362424R

- Cabinet hinged on the right; may be flipped for left hinge application.
- Cabinets require 24" x 24" of corner wall space.

**DIAGONAL WALL**

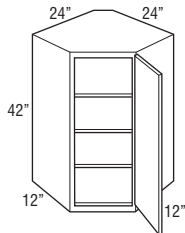
42" High

12" Deep

Model

DW422424R

- Cabinet hinged on the right; may be flipped for left hinge application.
- Cabinets require 24" x 24" of corner wall space.



## DIAGONAL WALL CUT-FOR-GLASS CABINETS

RECOMMENDED GLASS SIZE FOR WALL CABINET DOORS			
SKU	Costello Full Door Size	Door Route Size	Glass Size
DWCG302424R	14 1/2" x 29 1/2"	11 1/4" x 26 1/4"	11 1/16" x 26 1/16"
DWCG362424R	14 1/2" x 35 1/2"	11 1/4" x 32 1/4"	11 1/16" x 32 1/16"
DWCG422424R	14 1/2" x 41 1/2"	11 1/4" x 38 1/4"	11 1/16" x 38 1/16"

\*Recommended glass size dimensions are 3/16" smaller than glass route.

### DIAGONAL WALL CUT-FOR-GLASS

30" High

36" High

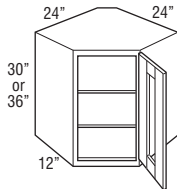
12" Deep

Model

DWCG302424R new

DWCG362424R new

- Cabinet hinged on the right; may be flipped for left hinge application.
- Cabinets require 24" x 24" of corner wall space.
- Glass not included.
- Cabinets will have matching interior.
- Available in Costello Full Sterling and White.



### DIAGONAL WALL CUT-FOR-GLASS

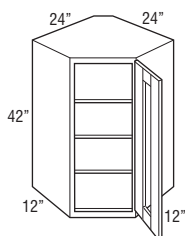
42" High

12" Deep

Model

DWCG422424R new

- Cabinet hinged on the right; may be flipped for left hinge application.
- Cabinets require 24" x 24" of corner wall space.
- Glass not included.
- Cabinets will have matching interior.
- Available in Costello Full Sterling and White.



## TABLE OF CONTENTS – BASE CABINETS



### **34 1/2" High, 24" Deep**

Base with Drawer .....	35
Full Height Base .....	36
Drawer Base .....	37
Base Built-in Microwave Cabinet with Drawer .....	39
Base Wastebasket .....	39
Sink Base .....	40
Base Corner .....	42

# BASE SINGLE DOOR

34½" High

24" Deep

Model

B9R

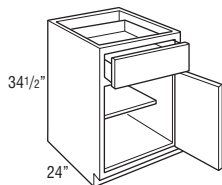
B12R

B15R

B18R

B21R

- Cabinet hinged on the right; door may be flipped for left hinge application.
- Roll tray kits available for 15"-21" widths.



## BASE DOUBLE DOOR

34½" High

24" Deep

Model

B24

B27

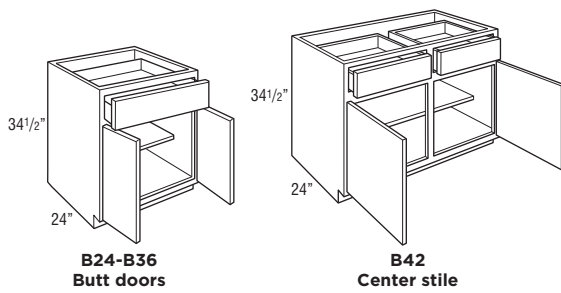
B30

B33

B36

B42

- Roll tray kits available for 24"-42" widths.



## FULL HEIGHT BASE SINGLE DOOR

34½" High

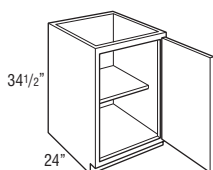
24" Deep

Model

B15FHR

B18FHR

- Cabinet hinged on the right; door may be flipped for left hinge application.
- Roll tray kits available for 15"-18" widths.



## FULL HEIGHT BASE DOUBLE DOOR

34½" High

24" Deep

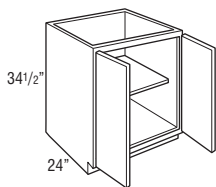
Model

B24FH

B30FH

B36FH

- Roll tray kits available for 24"-36" widths.



## TWO DRAWER BASE

34½" High

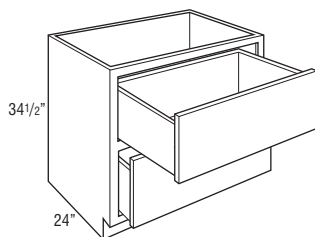
24" Deep

Model

2DB30

2DB36

- On door styles with slab drawer fronts, all drawer fronts will be slab.



# THREE DRAWER BASE

34 1/2" High

24" Deep

Model

3DB12

3DB15

3DB18

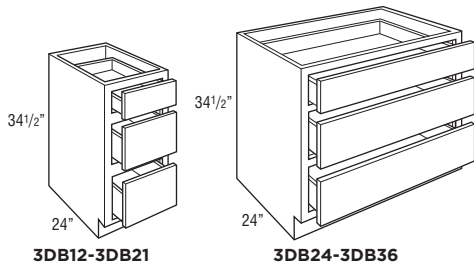
3DB21

3DB24

3DB30

3DB36

- On door styles with slab drawer fronts, all drawer fronts will be slab.



# BASE BUILT-IN MICROWAVE CABINET WITH DRAWER

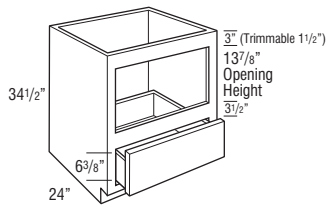
34 1/2" High

24" Deep

Model

BBMWD30

- Natural interior finish.
- For built-in appliance support, OCINSTALLKIT is included.
- For finished interior, consider field application of BP4834.514 (to cover interior sides, back, and field supplied floor).
- The usable cabinet face height between top of drawer front and top of cabinet is 19 1/8" for partial overlay and 19 3/4" for full overlay. Be sure to verify overall appliance height, gap requirements, and cut-out dimensions with cabinet specifications.



Model	Opening Width	Maximum Width	Opening Height	Maximum Height
BBMWD30	27"	28 1/2"	13 7/8"	16 7/8"

# BASE WASTEBASKET

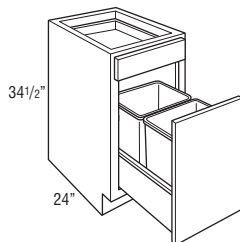
34 1/2" High

24" Deep

Model

BWB18

- Pull-out features undermount full extension, QuietClose guides.
- Includes two 35 quart gray wastebaskets.



## SINK BASE

34 1/2" High

24" Deep

Model

SB24

SB27

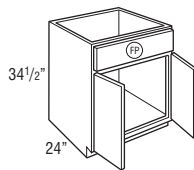
SB30

SB33

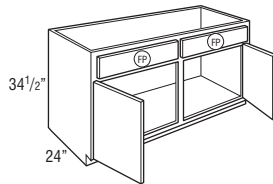
SB36

SB42

- Mini Touch-Up Kit (MTUK) included. MTUK includes small touch-up marker and small fill stick.
- Tilt-out tray kits available.



**SB24-SB36**  
Butt doors



**SB42**  
Center stile

## COUNTRY SINK BASE

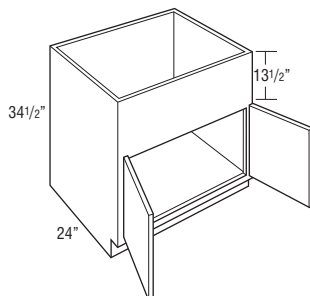
34 1/2" High

24" Deep

Model

CNTYSB36

- 13 1/2" panel can be trimmed up to 12".
- Mini Touch-Up Kit (MTUK) included. MTUK includes small touch-up marker and small fill stick.
- Refer to manufacturer's recommendations for additional support required for apron front sinks.



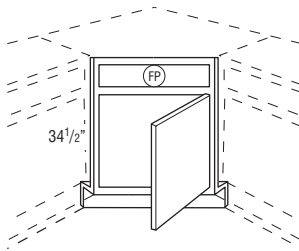
# ANGLED CORNER SINK FRONT WITHOUT SINK FLOOR

34 1/2" High

Model

ACSF36R

- Frame edges beveled at 45°.
- Toekick and toekick retainer shipped unattached from the face frame.
- Sink base floor not included.



Max. Sink Widths if cut-out is 4" back from face of front frame

Wall Width	Frame	Maximum Sink Width	Maximum Sink Depth
36" x 36"	17"	25 3/4"	27 11/32"

# ANGLED CORNER SINK FRONT BOTTOM

Model

ACSFB36

- Designed for use with Angled Corner Sink Front.
- 3/4" thick.
- 1-side laminated plywood.
- Not available in Costello Full Sterling.



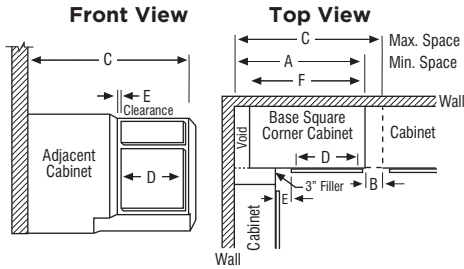
# BASE CORNER CABINETS

SKU	A Min. Space	B Max. Pull	C Max. Space	D Cabinet Opening	E Full Overlay		E Partial Overlay		F Actual Cabinet
					At Min.	At Max.	At Min.	At Max.	
BC36S	36"	6"	42"	7 1/2"	1 3/4"	7 3/4"	2 1/2"	8 1/2"	27"
BC42S	42"	6"	48"	13 1/2"	1 3/4"	7 3/4"	2 1/2"	8 1/2"	39"
BC48S	48"	3"	51"	16 1/2"	4 3/4"	7 3/4"	5 1/2"	8 1/2"	45"

- BCs use the wall space the nomenclature implies and may be pulled up to 3" to accommodate odd dimensions in a kitchen.
- Remember to use 3" filler on adjoining cabinets.
- The adjoining run of cabinets will cover the void.

**NOTE:**

Full overlay styles must be pulled an additional 1 1/2" to ensure proper drawer/pull clearance. 1 1/2" pull is not included in minimum and maximum list.



## BASE CORNER SINGLE DOOR

34 1/2" High

24" Deep

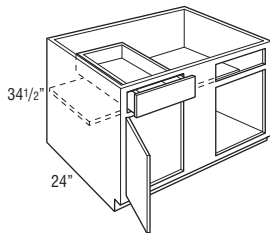
Model

BC36S

BC42S

BC48S

- Right blind shown; door and drawer can be reversed for left blind application.
- Filler required for installation. Must be ordered separately.



## BASE EASY REACH

34 1/2" High

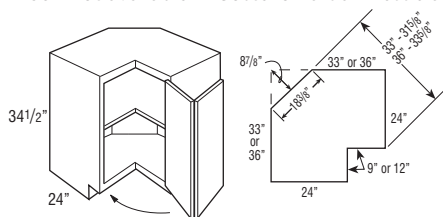
24" Deep

Model

BER33R new

BER36R

- BER33R wall width is 33" x 33". BER36R wall width is 36" x 36".
- Decorative hardware screws must be countersunk to prevent scratching of adjacent cabinets and face frame of BER.
- Not recommended for use next to an appliance deeper than standard cabinet depth.
- QuietClose not available.
- BER33R not available in Costello Partial Trestle and Costello Full Trestle.



Due to the fixed shelves mounting shelves cannot be retrofitted.

## SUPER LAZY SUSAN

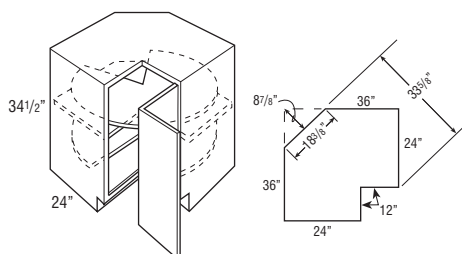
34 1/2" High

24" Deep

Model

SLS36R

- Wall width is 36" x 36".
- Features two plywood revolving shelves. Lower shelf is mounted to floor. Upper shelf is mounted to fixed shelf.
- Decorative hardware screws must be countersunk to prevent scratching adjacent cabinets and face frame of SLS.
- Not recommended for use next to an appliance deeper than standard cabinet depth.
- QuietClose not available.



Due to the fixed shelves mounting shelves cannot be retrofitted.

**BASE LAZY SUSAN**34<sup>1</sup>/<sub>2</sub>" High

24" Deep

---

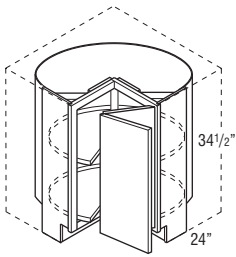
Model

---

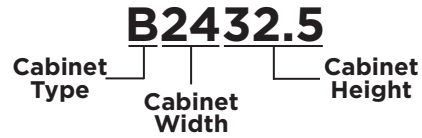
BLS36R

---

- Wall width is 36" x 36".
- Cabinet is drum-shaped; adjoining cabinets create sides.
- Features two white plastic shelves.
- Decorative hardware screws must be countersunk to prevent scratching of adjacent cabinets and face frame of BLS.
- Not recommended for use next to an appliance deeper than standard cabinet depth.
- QuietClose not available.



# TABLE OF CONTENTS - UNIVERSAL ACCESS CABINETS



## **32 1/2" High, 24" Deep**

Universal Access Base with Drawer .....	46
Universal Access Drawer Base .....	47
Universal Access Sink Base .....	48
Universal Access Base Sink Removable .....	48
Universal Access Base Corner .....	49

NOTE: Universal Access Cabinets must meet certain design requirements in order to be labeled ADA compliant.

**UNIVERSAL ACCESS, BASE SINGLE DOOR**

32½" High

24" Deep

---

Model

---

B932.5R

---

B1232.5R

---

B1532.5R

---

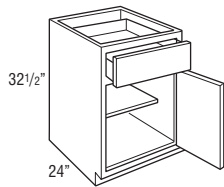
B1832.5R

---

B2132.5R

---

- Cabinet hinged on the right; door may be flipped for left hinge application.
- Roll tray kits available for 15"-21" widths.
- Available in Costello Full White.



## UNIVERSAL ACCESS, BASE DOUBLE DOOR

32 1/2" High

24" Deep

Model

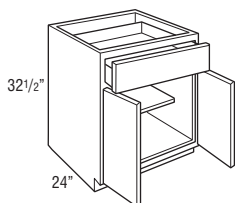
B2432.5

B3032.5

B3332.5

B3632.5

- Roll tray kits available for 24"-42" widths.
- Available in Costello Full White.



## UNIVERSAL ACCESS, THREE DRAWER BASE

32 1/2" High

24" Deep

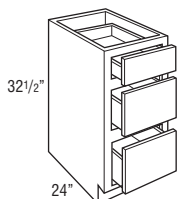
Model

3DB1232.5

3DB1532.5

3DB1832.5

- On door styles with slab drawer fronts, all drawer fronts will be slab.
- Available in Costello Full White.



## UNIVERSAL ACCESS, SINK BASE

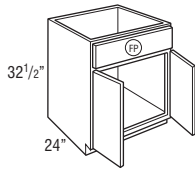
32 1/2" High

24" Deep

Model

SB3632.5

- Mini Touch-Up Kit (MTUK) included. MTUK includes small touch-up marker and small fill stick.
- Tilt-out tray kits available.
- Available in Costello Full White.



## UNIVERSAL ACCESS, BASE SINK REMOVABLE

32 1/2" High

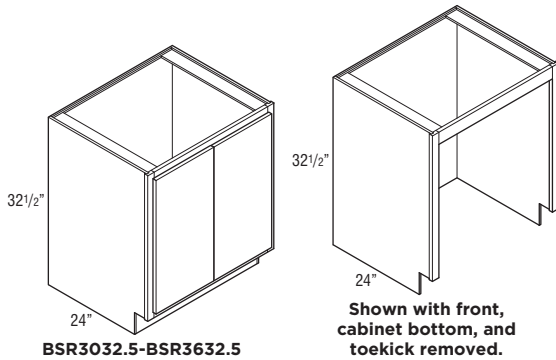
24" Deep

Model

BSR3032.5

BSR3632.5

- Cabinet must be supported on both sides. Not intended for end of run.
- Front, cabinet bottom, and toekick are removable.
- Mini Touch-Up Kit (MTUK) included. MTUK includes small touch-up marker and small fill stick.
- Available in Costello Full White.



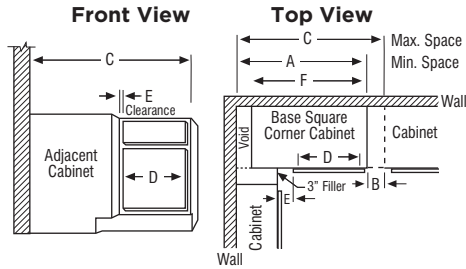
## UNIVERSAL ACCESS, BASE CORNER CABINETS

SKU	A Min. Space	B Max. Pull	C Max. Space	D Cabinet Opening	E Full Overlay At Min. At Max.		E Partial Overlay At Min. At Max.		F Actual Cabinet
BC3632.5S	32"	6"	42"	7 1/2"	1 3/4"	7 3/4"	2 1/2"	8 1/2"	27"

- BCs use the wall space the nomenclature implies and may be pulled up to 3" to accommodate odd dimensions in a kitchen.
- Remember to use 3" filler on adjoining cabinets.
- The adjoining run of cabinets will cover the void.

**NOTE:**

Full overlay styles must be pulled an additional 1 1/2" to ensure proper drawer/pull clearance. 1 1/2" pull is not included in minimum and maximum list.



## UNIVERSAL ACCESS, BASE CORNER SINGLE DOOR

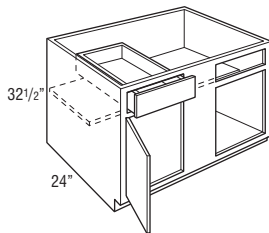
32 1/2" High

24" Deep

Model

BC3632.5S

- Right blind shown; door and drawer can be reversed for left blind application.
- Filler required for installation. Must be ordered separately.
- Available in Costello Full White.



## UNIVERSAL ACCESS, SUPER LAZY SUSAN

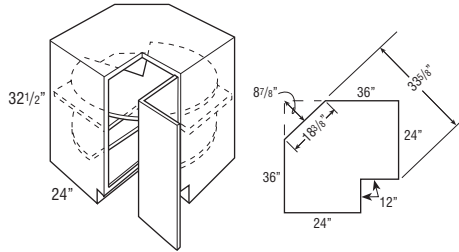
32<sup>1</sup>/<sub>2</sub>" High

24" Deep

Model

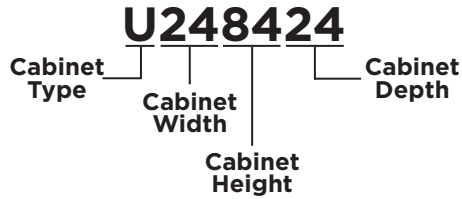
SLS3632.5R

- Wall width is 36" x 36".
- Features two plywood revolving shelves. Lower shelf is mounted to floor. Upper shelf is mounted to fixed shelf.
- Decorative hardware screws must be countersunk to prevent scratching adjacent cabinets and face frame of SLS.
- Not recommended for use next to an appliance deeper than standard cabinet depth.
- QuietClose not available.
- Available in Costello Full White.



Due to the fixed shelves mounting shelves cannot be retrofitted.

# TABLE OF CONTENTS - TALL CABINETS



## **24" Deep Utility Single Door**

84" High .....	.52
90" High .....	.52
96" High .....	.53

## **24" Deep Utility Double Door**

84" High .....	.53
90" High .....	.54
96" High .....	.54

## **24" Deep Single Oven Three Drawers**

90" High .....	.55
96" High .....	.55

## UTILITY SINGLE DOOR

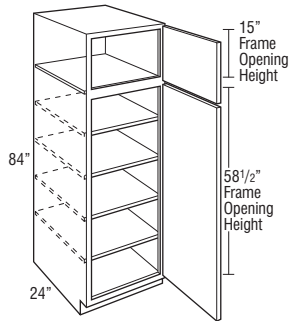
84" High

24" Deep

Model

U188424R

- Roll tray kits available.
- Cabinet hinged on the right; door may be flipped for left hinge application.



## UTILITY SINGLE DOOR

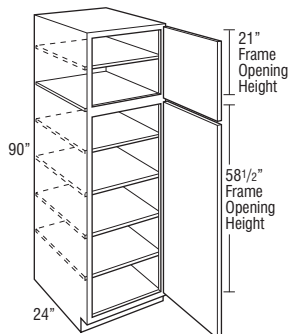
90" High

24" Deep

Model

U189024R

- Roll tray kits available.
- Cabinet hinged on the right; door may be flipped for left hinge application.



**UTILITY SINGLE DOOR**

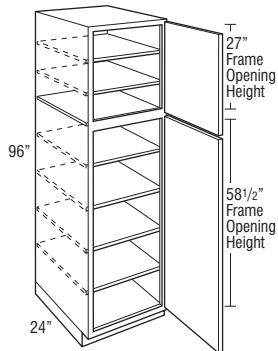
96" High

24" Deep

Model

U189624R

- Separate pedestal base included on 96" tall.
- Roll tray kits available.
- Cabinet hinged on the right; door may be flipped for left hinge application.

**UTILITY DOUBLE DOOR**

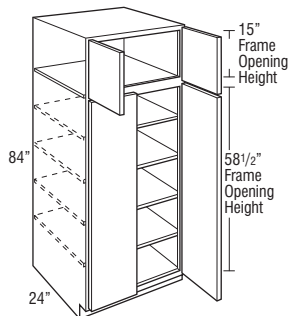
84" High

24" Deep

Model

U248424

- Roll tray kits available.



## UTILITY DOUBLE DOOR

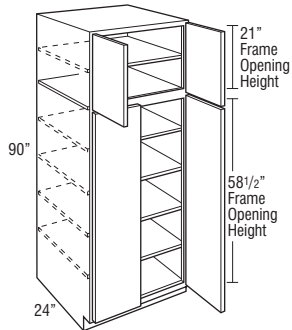
90" High

24" Deep

Model

U249024

- Roll tray kits available.



## UTILITY DOUBLE DOOR

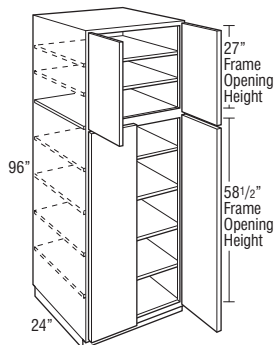
96" High

24" Deep

Model

U249624

- Separate pedestal base included on 96" tall.
- Roll tray kits available.



# SINGLE OVEN THREE DRAWERS

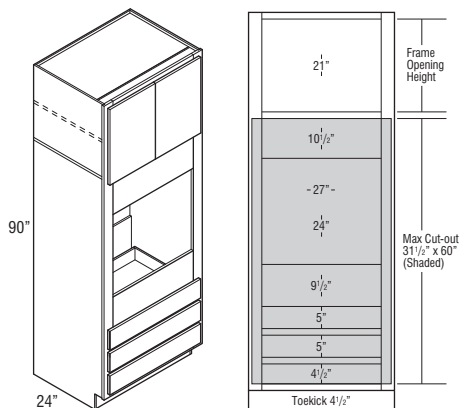
90" High

24" Deep

Model

OC3D339024

- Oven cabinets feature an open back in cut-out area designed to improve field appliance installation.
- Metal appliance support brackets included for 24" deep cabinets.



# SINGLE OVEN THREE DRAWERS

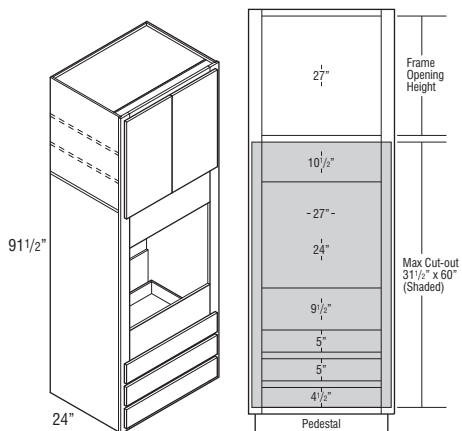
96" High

24" Deep

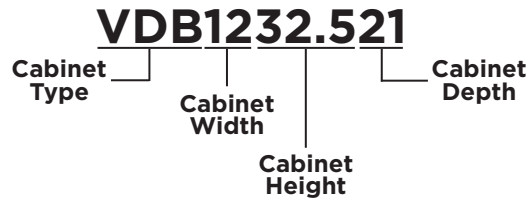
Model

OC3D339624

- Oven cabinets feature an open back in cut-out area designed to improve field appliance installation.
- Metal appliance support brackets included for 24" deep cabinets.
- Separate pedestal base included on 96" tall.



## TABLE OF CONTENTS - VANITY CABINETS



### **32 1/2" High, 21" Deep**

Vanity Drawer Base .....	57
Vanity Sink Base .....	57

### **34 1/2" High, 21" Deep**

Vanity Base with Drawer .....	58
Vanity Drawer Base .....	58
Vanity Sink Base .....	59
Vanity Sink Drawer Base .....	59

## VANITY DRAWER BASE

32½" High

21" Deep

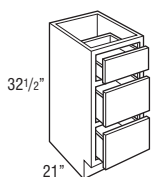
Model

VDB1232.521

VDB1532.521

VDB1832.521

- On door styles with slab drawer fronts, all drawer fronts will be slab.



## VANITY SINK BASE

32½" High

21" Deep

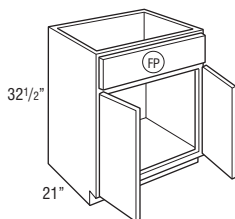
Model

VSB2432.521

VSB3032.521

VSB3632.521

- Tilt-out tray kits available.



## VANITY BASE SINGLE DOOR

34½" High

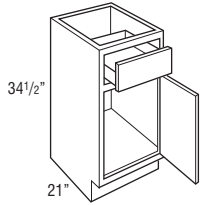
21" Deep

Model

VB153421R

VB183421R

- Cabinet hinged on the right; door may be flipped for left hinge application.



## VANITY DRAWER BASE

34½" High

21" Deep

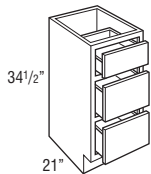
Model

VDB123421

VDB153421

VDB183421

- On door styles with slab drawer fronts, all drawer fronts will be slab.



## VANITY SINK BASE

34½" High

21" Deep

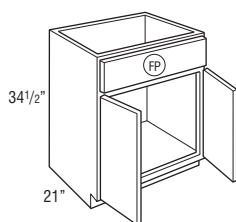
Model

VSB243421

VSB303421

VSB363421

- Tilt-out tray kits available.



## VANITY SINK DRAWER BASE

34½" High

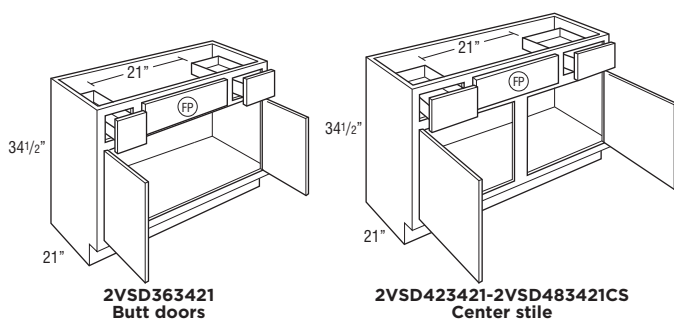
21" Deep

Model

2VSD363421

2VSD423421

2VSD483421CS



## TABLE OF CONTENTS - FILLERS, SKINS, PANELS, & MOULDING

Fillers .....	.61
Skins .....	.63
Panels .....	.65
Crown Moulding .....	.68
Starter Moulding .....	.70
Accent Moulding .....	.70
Corner Moulding .....	.72
Toeboard .....	.73
Straight Valance / Baseboard .....	.74

## 3" FILLER

---

Model

---

F330

---

F336

---

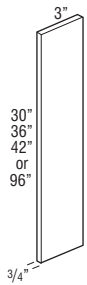
F342

---

TF396FH

---

- 3/4" thick.
- Finished on front and two long edges (backs are not finished).



## 6" FILLER

---

Model

---

F630

---

F636

---

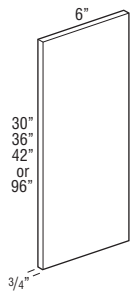
F642

---

TF696FH

---

- 3/4" thick.
- Finished on front and two long edges (backs are not finished).



## END PANEL SKINS

---

Model

---

WEPS42LAM14

---

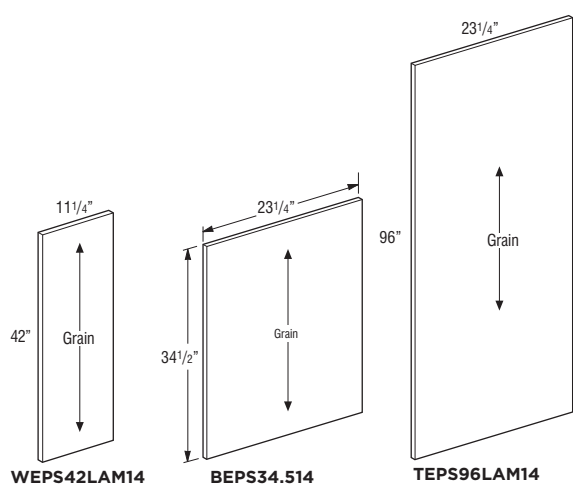
BEPS34.514

---

TEPS96LAM14

---

- 1/4" thick laminated furniture board.



## FINISHED BACK SKINS

---

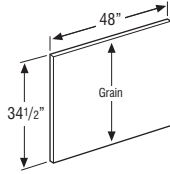
Model

---

BP4834.514

---

- 1/4" thick laminated furniture board.
- Grain runs with 34.5".



## FINISHED BACK SKINS

---

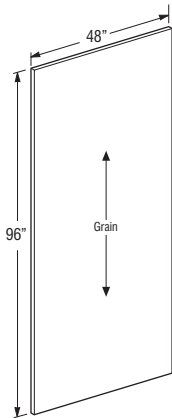
Model

---

BP4896LAM14

---

- 1/4" thick laminated furniture board.
- Grain runs with 96".



## TALL END PANELS

---

Model

---

TEP2484LAM

---

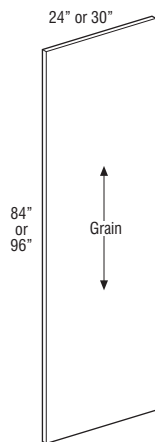
TEP2496LAM

---

TEP3096LAM

---

- 3/4" thick laminated furniture board.
- Panels are edgebanded on front edge.



## BASE AND TALL PANELS WITH FILLER ATTACHED

Model

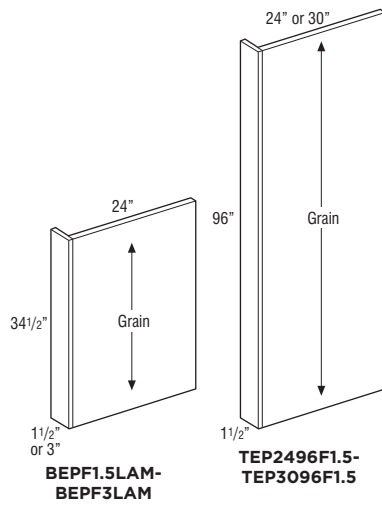
BEPF1.5LAM

BEPF3LAM

TEP2496F1.5

TEP3096F1.5

- 1/2" thick laminated furniture board.
- All panels have Natural Maple laminate interior.



## WALL DECORATIVE DOOR END PANEL KIT

Model

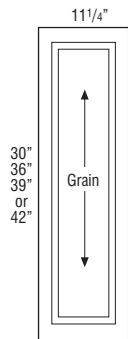
WED1230 new

WED1236 new

WED1239 new

WED1242 new

- Door panel kits include Wall End Panel Skin and door with attachment screws for field installation.
- Available in Costello Full Sterling and White.

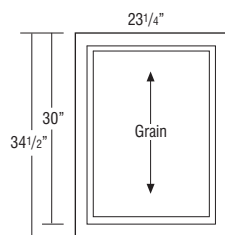


## BASE DECORATIVE DOOR END PANEL KIT, SINGLE DOOR

Model

BEDSD new

- Door panel kits include Base End Panel Skin and door with attachment screws for field installation.
- Available in Costello Full Sterling and White.

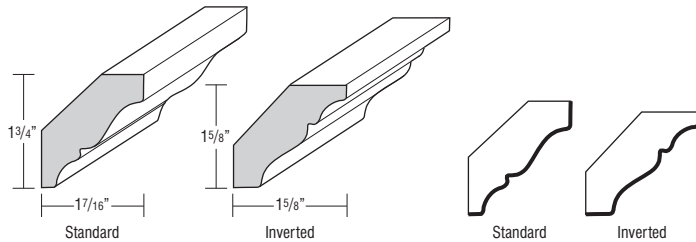


## CROWN MOULDING, SOLID WOOD CROWN

Model

SWCRM8

- Face mounts on Partial Overlay doors.
- May be face mounted on Full Overlay if used with a cleat.
- One 8' section.
- Moulding can be used as standard or inverted.
- Finished edges indicated by bold lines on side view drawings.

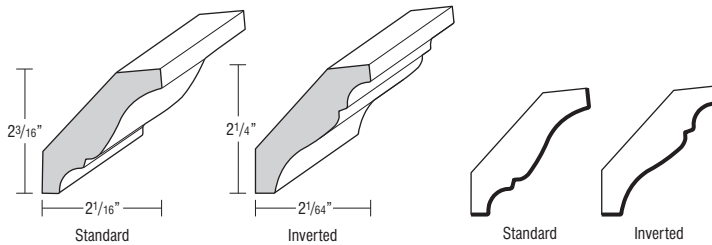


## CROWN MOULDING, SOLID WOOD LARGE CROWN

Model

SWLCRM8

- Face mounts on Partial Overlay doors.
- May be face mounted on Full Overlay if used with a cleat.
- One 8' section.
- Moulding can be used as standard or inverted.
- Finished edges indicated by bold lines on side view drawings.

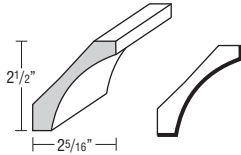


## CROWN MOULDING, SMALL COVE CROWN

Model

SMCOVECROWN8

- One 8' section.
- Finished edges indicated by bold lines on side view drawings.

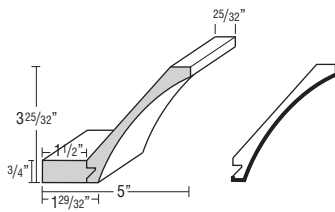


## CROWN MOULDING, COVE CROWN

Model

COVECROWN8

- One 8' section.
- Cleat shipped unattached can be used for top mount or face frame applications.
- Finished edges indicated by bold lines on side view drawings.



## STARTER MOULDING, SHAKER

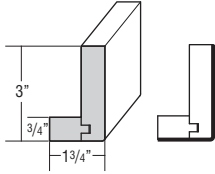
---

Model

---

STRS8

- One 8' section.
- Finished edges indicated by bold lines on side view drawings.



## ACCENT MOULDING, FLAT SCRIBE

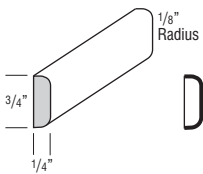
---

Model

---

SM8

- One 8' section.
- Finished edges indicated by bold lines on side view drawings.

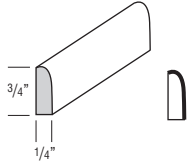


## ACCENT MOULDING, SMALL SCRIBE

Model

SSM8

- One 8' section.
- Finished edges indicated by bold lines on side view drawings.

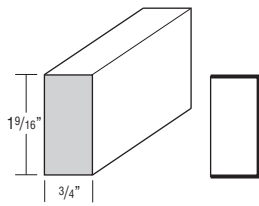


## ACCENT MOULDING, LIGHT BAFFLE

Model

LB2

- One 8' section.
- Finished edges indicated by bold lines on side view drawings.



## CORNER MOULDING, INSIDE CORNER

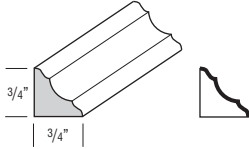
---

Model

---

ICM8

- One 8' section.
- Finished edges indicated by bold lines on side view drawings.



## CORNER MOULDING, OUTSIDE CORNER

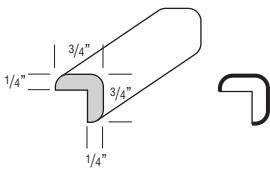
---

Model

---

OCM8

- One 8' section.

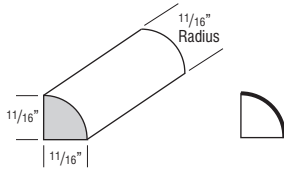


# CORNER MOULDING, QUARTER ROUND

Model

QRM

- One 8' section.
- Finished edges indicated by bold lines on side view drawings.



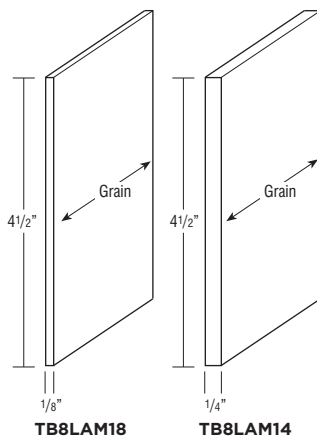
# TOEBOARD

Model

TB8LAM18

TB8LAM14

- One 8' section.
- TB8LAM18: 1/8" laminated furniture board.
- TB8LAM14: 1/4" laminated furniture board.



## STRAIGHT VALANCE / BASEBOARD

---

Model

---

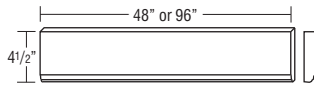
VV48

---

VV96

---

- Trimmable.
- Profiled bottom edge 3/4" thick.



# TABLE OF CONTENTS - ACCESSORIES AND HINGES

Roll Tray Kits .....76  
Tilt-out Trays .....77  
Bumper Pads .....77  
Drawer Guide Kits .....78  
Stain, Paint, & Touch-up Tools .....79  
Hinges .....80

## ROLL TRAY KITS

---

 Model
 

---



---

 RT15WD
 

---



---

 RT18WD
 

---



---

 RT21WD
 

---



---

 RT24WD
 

---



---

 RT27WD
 

---



---

 RT30WD
 

---



---

 RT33WD
 

---



---

 RT36WD
 

---

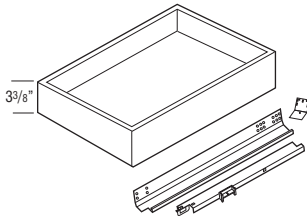


---

 RT42WD
 

---

- 5/8" solid-wood dovetail roll tray with QuietClose, undermount, full extension guides.
- RT15WD-RT36WD kits contain 1 roll tray, roll tray brackets, hardware, and screws.
- RT42WD kits contain 2 roll trays, roll tray brackets, hardware, and screws.
- Exterior dimensions of roll trays are 21" deep x 3 3/8" tall (fits standard 24" deep cabinet).



Width	Application
15"	B15, B15FH, B1532.5
18"	B18, B18FH, B1832.5, U18
21"	B21, B2132.5, B21FH
24"	B24, B24FH, B2432.5, U24
27"	B27
30"	B30, B30FHB, B3032.5
33"	B33, B3332.5
36"	B36, B36FH, B3632.5
42"	B42

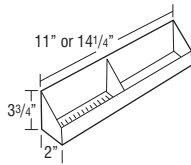
## TILT-OUT TRAYS

Model

TOT15

TOT18

- TOT15: 11" w x 2" d x 3 3/4" h
- TOT18: 14 1/4" w x 2" d x 3 3/4" h
- Kit includes two white plastic trays and one pair of tilt-out hinges that attaches to the inside of the false panel.
- One tilt-out tray per false panel on cabinets less than 30" wide and greater than 36" wide, two tilt-out trays attached to one false panel on 30"-36" wide cabinets.



Cab Width	TOT Size	Cabinets
24"	TOT18	SB24, VSB2432.521, VSB243421
27"	TOT18	SB27
30"	TOT15	SB30, VSB3032.521, VSB303421
33"	TOT15	SB33
36"	TOT18	SB36, SB3632.5, VSB3632.521, VSB363421
42"	TOT18	SB42

## BUMPER PADS

Model

BUMPERPADS

- Package of 25.

## DRAWER GUIDE KITS

---

Model

---

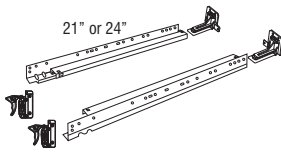
DGK21PG

---

DGK24PG

---

- Undermount full extension, QuietClose guide.
- Kit includes guide hardware for one drawer box (cabinets and drawer members, sockets and screws).
- Dimension refers to cabinet depth.



## STAIN & PAINT

Model

QUARTCOLOR new

SSC new

SSCCLEAR new

- Wiping stain can be sprayed at low pressure.
- SSC is a 384 mL aerosol can available in Paint colors.
- SSCCLEAR is a 384 mL aerosol can in clear.

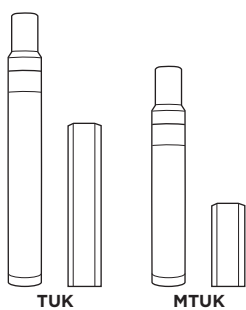
## TOUCH-UP KIT

Model

TUK new

MTUK

- TUK includes touch-up marker and a fill stick.
- MTUK includes small touch-up marker and a small fill stick.



## PARTIAL OVERLAY HINGE

---

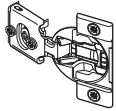
Model

---

38NPOHINGE

---

- Partial Overlay 107° Hinge, 6-way adjustable with integrated QuietClose.
- Sold in pairs.
- For use on Partial Overlay Styles, Full Overlay Diagonal Wall Cabinets and Angled Corner Sink Fronts.



## FULL OVERLAY HINGE

---

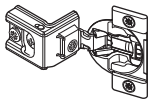
Model

---

38CFOHINGE

---

- Full Overlay 107° Hinge, 6-way adjustable with integrated QuietClose.
- Sold in pairs.



## FULL OVERLAY HINGE

---

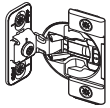
Model

---

38BFOVHINGE

---

- Full Overlay face mount 107° Hinge, 4-way adjustable with integrated QuietClose.
- Sold in pairs.
- For use on OC3D cabinets.



## HINGE ANGLE RESTRICTION CLIP

---

Model

---

HINGERESCLIP

---

- For use in applications with cabinets installed at varying depths to prevent the door damage caused by opening into an adjacent cabinet.
- Restricts hinges to 86° opening capability.
- Works only with the 38NPOHINGE and 38CFOHINGE.
- Not recommended for cabinets with roll trays installed in partial overlay styles.
- Sold in pairs.



## HINGE SHIM

---

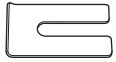
Model

---

HINGESHIM5

---

- Install between the face frame and hinge to allow additional adjustment of doors.
- Can be used to reduce gap between butt doors.
- Pack of 5 metal shims.
- Compatible with all hinges except face-mount.





# Thomasville®

CABINETRY

Your work day is filled with enough hassles, Thomasville Cabinetry believes your cabinet order shouldn't be another one. Let our experts help you!

## Your Dedicated Customer Service Team:

Phone: 1.800.317.0510

Fax: 888.202.1192

Email: [elements@masterbrand.com](mailto:elements@masterbrand.com)

Hours: Monday - Friday 8:00 AM to 6:00 PM EST

Saturday 9:00 AM to 1:00 PM EST

Rep Name:

Phone Number:



Styles, product availability and construction may vary slightly from those shown in this book due to material availability and/or design evolution. Specifications are subject to change without notice. Customer service is available if your design requires verification of product availability and specifications.

Product photography and illustrations have been reproduced as accurately as printing technologies permit. To ensure highest satisfaction, we strongly recommend you view an actual sample for best color, wood grain and finish representation.

### Thomasville™ has a Limited Lifetime Warranty.

For terms and conditions, please visit: [www.thomasvillecabinetry.com/about#limited-lifetime-warranty](http://www.thomasvillecabinetry.com/about#limited-lifetime-warranty)

**Front cover image:** COSTELLO PARTIAL Trestle, EVERLY White, COSTELLO FULL Sterling, COSTELLO PARTIAL White, COSTELLO FULL Trestle, EVERLY Sterling, and COSTELLO FULL White

Thomasville™ is a trademark of HHG IPCo, LLC. ©HHG IPCo, LLC. [thomasville.com](http://thomasville.com)



Part of the  
MasterBrand™  
Family

[thomasvillecabinetry.com](http://thomasvillecabinetry.com)

#thomasvillecabinetry

© 2021 MasterBrand Cabinets, Inc., All rights reserved.