

July 2023

TH&amp;A Monthly Training

[www.THAHD.com](http://www.THAHD.com)

*Thomasville Experience:*  
**Making Peninsula Cabinets**

Do you have a  
 20-20 question?

Ask your  
 Thomasville Representative!

# TH&A

Todd Haley &amp; Associates

Your Store Representative

**Paul Cunningham**

615-681-2686 cell

pcunningham@toddhaley.com

**Adam Johnson**

678-736-9934

ajohnson@toddhaley.com

**Christian Pelage**

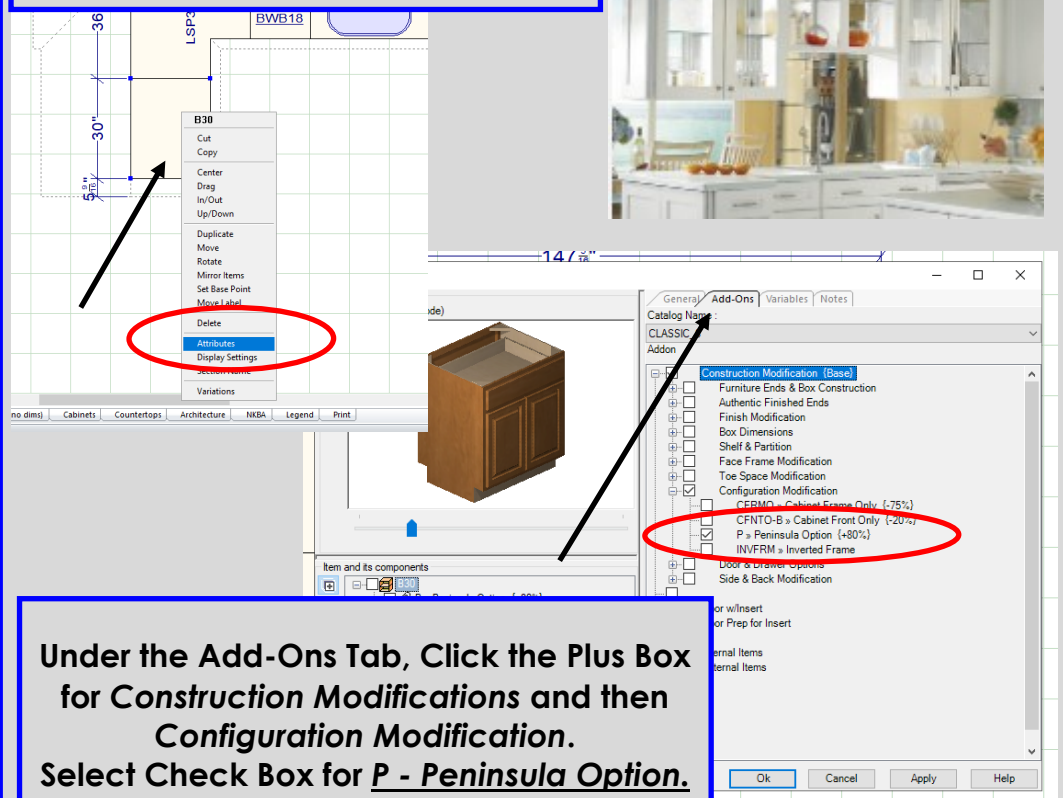
803-846-1902 cell

cpelage@toddhaley.com

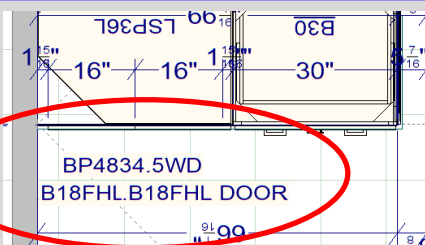
[www.thomasvillecabinetry.com](http://www.thomasvillecabinetry.com)  
[www.homedepot.com](http://www.homedepot.com)

## Thomasville Experience: Making Peninsula Cabinets– Framed Collections

Right-click on the desired cabinet.  
 Go into "Attributes"



Under the Add-Ons Tab, Click the Plus Box  
 for *Construction Modifications* and then  
*Configuration Modification*.  
 Select Check Box for P - Peninsula Option.  
 Then Select Apply and OK



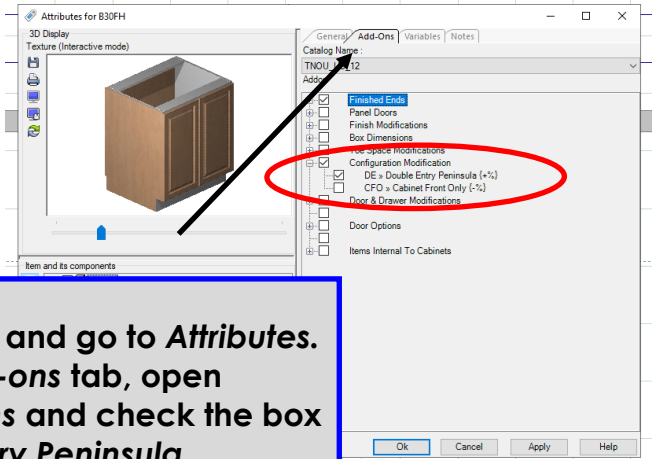
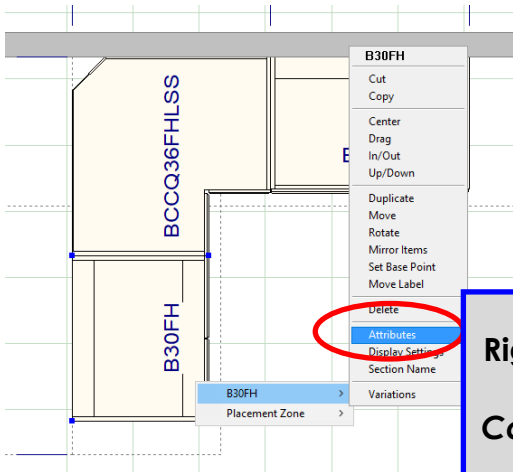
This increases the depth of  
 the cabinet by 1/4", allowing  
 you to add a skin and deco  
 doors to the back of the  
 adjacent cabinet!



**Helpful Hint**– The Peninsula Side  
 will mimic the front. If you don't  
 want a False Drawer Front, make  
 sure to use a Full Height Cabinet.  
*Don't forget Base Molding  
 or Toe Kicks*

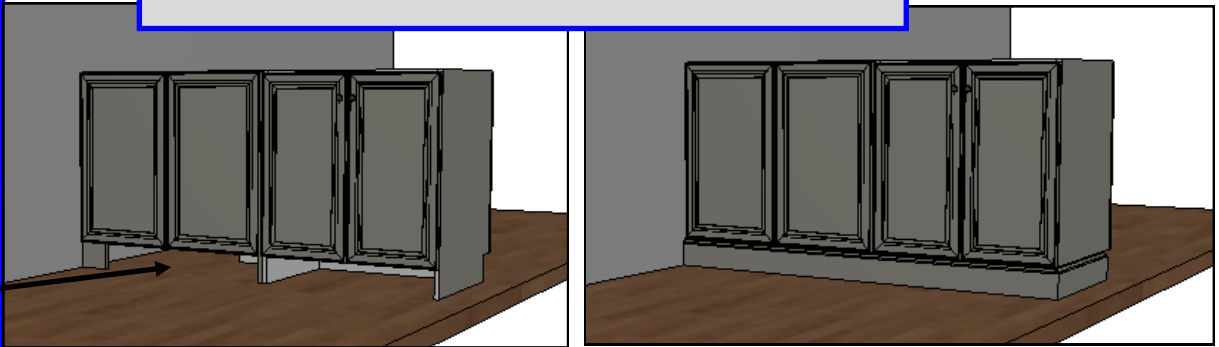
*See Next Page to continue:*

# Thomasville Experience: Making Peninsula Cabinets Nouveau—Frameless



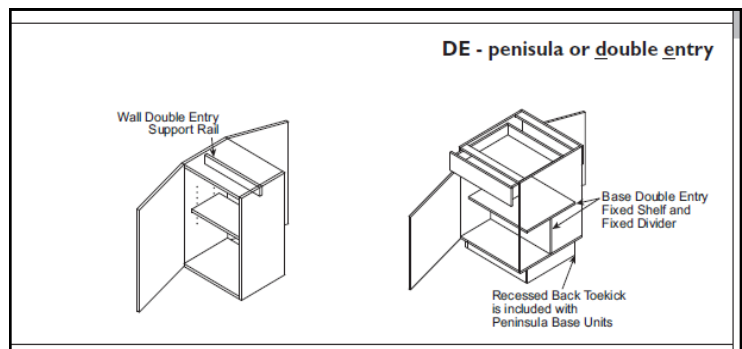
**Right-Click on the cabinet and go to *Attributes*. Then under the *Add-ons* tab, open *Configuration Modifications* and check the box for *DE— Double Entry Peninsula*. Click *Apply* and *OK*.**

*Don't forget to plan for Base Molding to cover any open areas on the back side of the cabinets.*



**★ If you need to add a skin to an adjacent cabinet, modify the depth of one of the cabinets under *Box Dimensions*. Increasing or decreasing one by 1/4" will allow for a skin to be applied.**

**In Frameless Cabinets, additional structural support is needed for Peninsula cabinets. Support rails are added to the base and wall cabinets as shown.**



***Thomasville Cabinetry  
Available only at Home Depot!  
We are Home Depot!***

