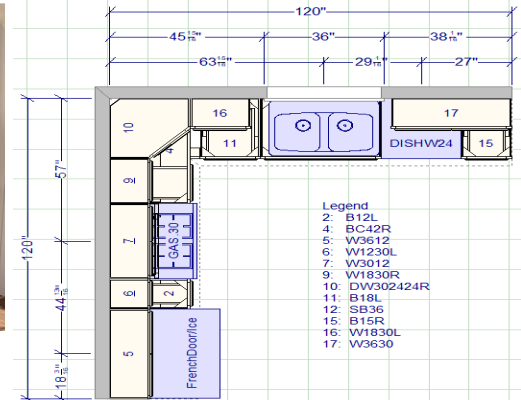




MasterBrand 10x10 Comparisons

Use this generic Home Depot 10x10 Kitchen to determine True linear foot pricing of all brands.

Learn the Power of the MasterBrand Portfolio.
 One Manufacturer, multiple solutions for your customers.



Open 2020 and design this kitchen in Studio 1904.

- Set door style to Costello FO, Maple, White. Save and send to ESVS for pricing.

GSV window

- In 2020 under the items menu, open the styles and pricing dialog box and find the three horizontal bars in the GSV window (global style validation) to clear selections.
- Edit/Switch Items to Thomasville. Set door to Cottage, Maple, White, save and send to ESVS.
- Repeat steps in second bullet and Edit/Switch items to Decora. Set door to Harmony, Maple, White, save and send to ESVS.
- Repeat steps in second bullet and Edit/Switch items to Nouveau. Set door to Anson, Maple, White for a Value series door or Lakefield, Maple, White for a standard series door, save and send to ESVS.



January 2019
 TH&A Monthly Training

10x10 Comparisons

Do you have a 20-20 question?

Ask your MasterBrand Representative!



Ginny Edens

Your Store Representative
 770-424-7518 office
 gedens@toddhaley.com

Angeline Hannachi

704-773-3306 cell
 ahannachi@toddhaley.com

Cheryl Weaver

678-468-5103 cell
 cweaver@toddhaley.com

Josh Wilson

205-259-8141 cell
 jwilson@toddhaley.com

Judson Haley

770-769-6809 cell
 jhaley@toddhaley.com

Mike Wilson

770-310-5710 cell
 mwilson@toddhaley.com

Paul Cunningham

615-681-2686 cell
 pcunningham@toddhaley.com

Thomas D. Clarke

225-240-0529 cell
 tclarke@toddhaley.com

Valerie Hurst

704-493-4977 cell
 vhurst@toddhaley.com

www.thomasvillecabinetry.com
 www.homedepot.com

*Thomasville Cabinetry & Martha Stewart
 Living Cabinets
 Available only at Home Depot!
 We are Home Depot!*

