

Thomasville® Nouveau

CABINETRY



The Nouveau Report

December 2022

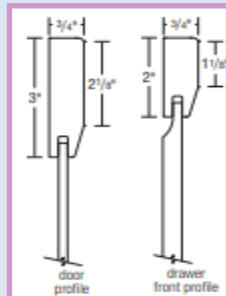
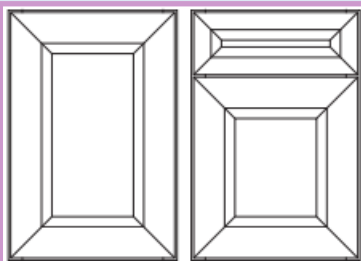
Visit us at
thomasvillecabinetry.com
Or
<https://www.THAHD.com>

LUKA



Conifer on Maple

- Contemporary Elegance
- 3" wide stiles and rails with a chamfered inside profile; mitered corners
- Center panel is 3/16" solid recessed.
- 5pc mitered drawer front, 1/2" solid recessed center
- Doors under 8" wide will be slab panel



Maple \$352/LF

RA \$299/LF

Oak \$299/LF

Cherry \$377/LF

Rift Oak \$377/LF

MDF \$346/LF

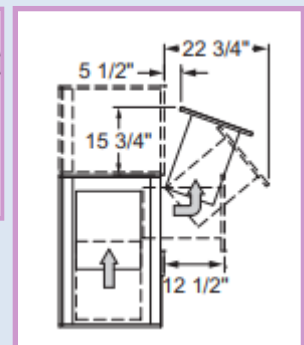
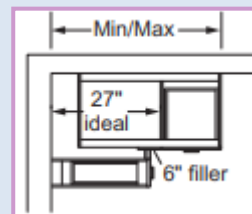
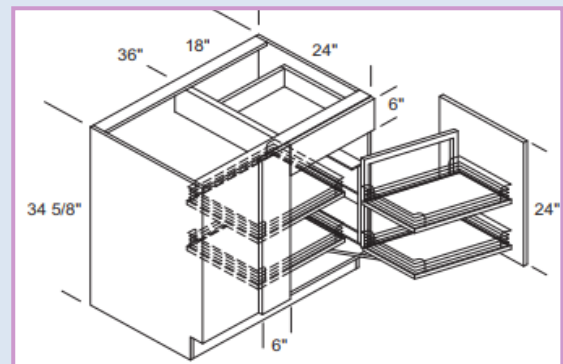
Construction Specifications/Options:

| | |
|--------------------------------|---------|
| White Interior | |
| Natural Interior | ✓ |
| Glass Inserts | ✓ |
| Plywood Construction Available | Upgrade |
| Metal Drawers* | ✓ |
| Wood Drawers | ✓ |

*Drawer bottom and back will match interior of cabinet.

Base Blind w/ Magic Corner

BCMCL3618, BCMCR3618



- One door, one drawer, four chrome wire shelves w/ gray melamine bottoms and 6" filler on blind side
- Min Pull 43"; Max Pull 48"
- Pull-out and door slides forward toward end stop and swivels aside. Simultaneously, a follower mechanism draws the rear pull-out to the front of the cabinet

PG. 178

TH&A

Todd Haley & Associates

Adam Johnson

678-736-9934

ajohnson@toddhaley.com

Paul Cunningham

615-681-2686

pcunningham@toddhaley.com

Christian Pellage

803-846-1902

cpellage@toddhaley.com

What Designers are saying about Thomasville Nouveau:

"I like the flexibility with the increments in Nouveau.
I have always loved the frameless look".

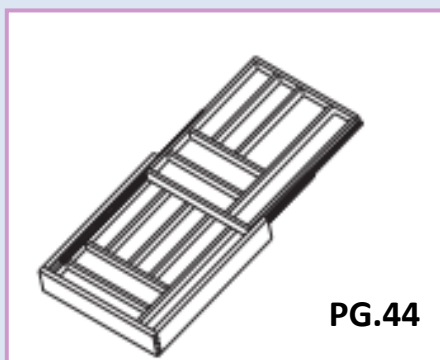
Sara Grieser HD1104



Modifications

Embellishments

WTCD-Wood Tiered Cutlery Drawer

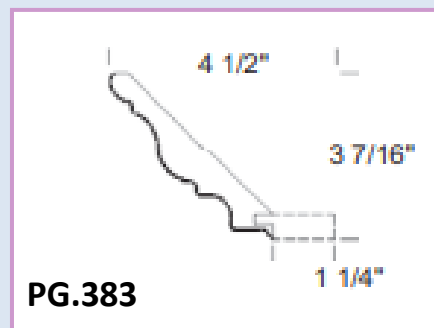


- Available for most base and tall cabinets with wood drawers
- This modification replaces the current top drawer with a wood tiered cutlery drawer
- Tired cutlery drawer uses the same drawer guides as the drawer it replaces

Look for this Custom Modification Chart

| | | | | | | | | | | | |
|-----|-----|----|------|-----|-----|-----|---------|------|------|-----|------|
| NCS | NTK | OS | RDL/ | RDT | SFF | SOT | TKL/TKR | TDDR | TDWR | VFN | WTCD |
| ✓ | ✓ | ✓ | ✓ | ✓ | ✓ | ✓ | ✓ | ✓ | ✓ | ✓ | ✓ |

Heavy Crown Moulding



- HCRM96C– 8' heavy crown moulding with cleat
- HCRM96P– 8' heavy crown, No Cleat
- Last letter of mouldings product code indicates with cleat "C", or plain "P"
- 93" of these mouldings will be clear
- Also available in 120" lengths, of which 117" will be clear
- If C or P is not specified where required, moulding will be sent with cleat

Species Availability Options

| | | | | | | | | | | |
|---------|--------|--------|------------------|-------|-----|-----------|-----|-----|-------------|-------------|
| Acrylic | Bamboo | Cherry | Gloss Thermofoil | Maple | MDF | Melamine* | Oak | Oak | Rift Rustic | Thermofoil* |
| ✓ | ✓ | ✓ | ✓ | ✓ | ✓ | ✓ | ✓ | ✓ | ✓ | ✓ |

*120" product not available in melamine and thermofoil.

Thank you for selling your House Brand, Thomasville Nouveau!

We are your partners to help you with the sale every time!

Visit your web page <https://www.THAHD.com>

TH&A

Todd Haley & Associates



MASTERBRAND
CABINETS, INC.