

Thomasville Elements

CABINETRY

Visit us at thomasvillecabinetry.com

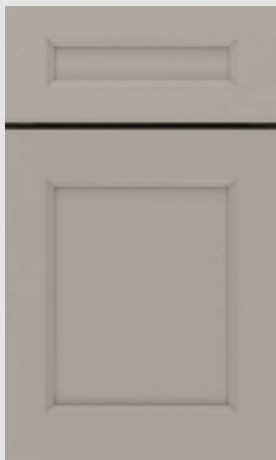
Or

<https://www.THAHD.com>

May 2022 Training Agenda

MASTER BRAND
CABINETS, INC.

Everly Painted Sterling



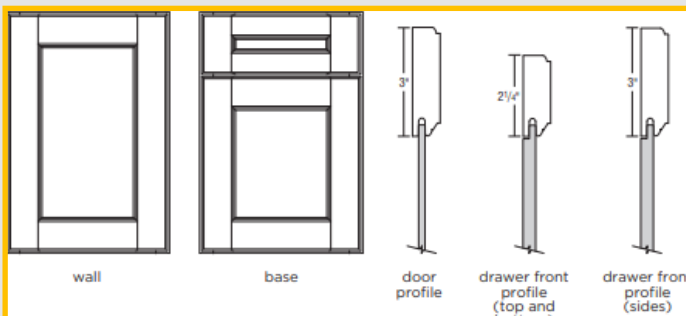
- * Full Overlay Transitional Door Style
- * 3" Rail
- * Veneer Center Panel
- * 5-PC Drawer Front Standard
- * Available in Painted White and Sterling

White/Sterling \$219

Pg. 6

Elements Product Specifications:

All Plywood Construction, 1/2" Matching Laminated Finished Ends, 3/8" top, back, bottom, and I-Beam braces; 3/4" hardwood frame; 5/8" dovetailed solid wood drawer box; QuietClose™ Undermount Full Extension Guides and 6-way adjustable hinges



Base Corner Cabinets

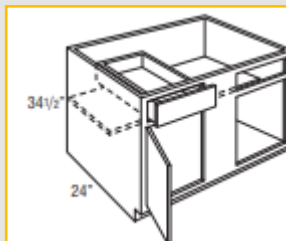
BC36S

BC42S

BC48S

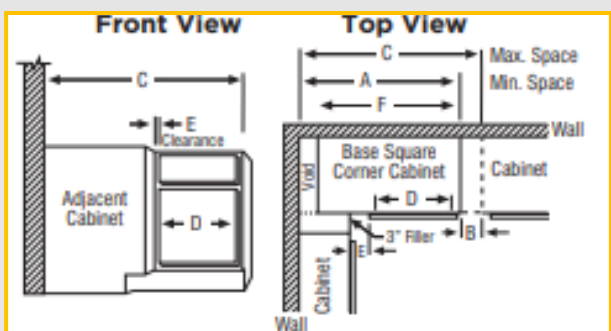
BC's use the wall space the nomenclature implies and may be pulled to the maximum shown in the chart below. **3" filler are required and sold separately.** NOTE: Full overlay styles must be pulled at least 1-1/2" beyond minimum space to insure drawer/pull clearance.

Pg. 42



Right blind shown; door and drawer must be reversed in field for left blind application.

Required filler must be ordered separately.



SKU	A Min. Space	B Max. Pull	C Max. Space	D Cabinet Opening	E Full Overlay At Min. At Max.	F Partial Overlay At Min. At Max.	F Actual Cabinet
BC36S	36"	6"	42"	7 1/2"	13/4" 7 3/4"	2 1/2" 8 1/2"	27"
BC42S	42"	6"	48"	13 1/2"	13/4" 7 3/4"	2 1/2" 8 1/2"	39"
BC48S	48"	3"	51"	16 1/2"	4 3/4" 7 3/4"	5 1/2" 8 1/2"	45"

TH&A

Todd Haley & Associates

Paul Cunningham

615-681-2686

pcunningham@toddhaley.com

Adam Johnson

678-736-9934

ajohnson@toddhaley.com

Thomas D. Clarke, CKD

225-240-0529

tclarke@toddhaley.com

Ginny Edens

770-424-7518

gedens@toddhaley.com



Thomasville **ELEMENTS** a modern, vintage vibe cabinetry offering that is exclusive to The Home Depot!

Thomasville **ELEMENTS**
CABINETS

ELEMENTS REMINDERS

Here's a few items you should add to every Elements kitchen you sell.

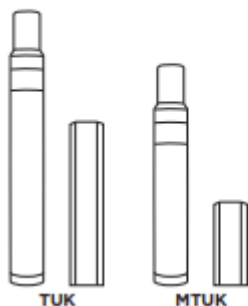
TOUCH-UP KIT

Model

TUK new

MTUK

- TUK includes touch-up marker and a fill stick.
- MTUK includes small touch-up marker and a small fill stick.

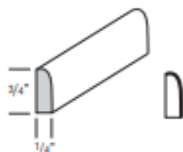


PG.79

Model

SSM8

- One 8' section.
- Finished edges indicated by bold lines on side view drawings.



PG.71

HINGE ANGLE RESTRICTION CLIP

Model

HINGERESCLIP

PG.81

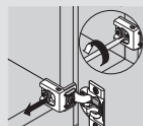


This restriction clip works with Full Overlay Hinges (38CFOHINGE) and Partial Overlay Hinges (38NPOHINGE). Use this restrictor clip (sold in pairs) with cabinets installed at varying depths to prevent the door from opening into an adjacent cabinet causing damage to the door. Examples would be wall cabinets adjacent to a tall pantry, oven cabinet or refrigerator end panel (TEP___). Also consider using this restrictor clips whenever a wall cabinet door opens toward an over-the- range microwave oven or range hood. The HINGERESCLIP restricts hinge opening to 86*. Use one clip per hinge. Installation instructions can be found in your Designer Handbook.

Assembly Instructions

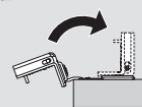
Step 1 — Remove door

Loosen and remove installation screws.



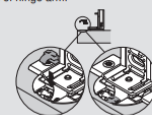
Step 2 — Rotate hinge arm

Rotate hinge arm to closed position. "click"



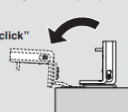
Step 3 — Insert angle restriction clip

Insert angle restriction clip (38C315B3.1) into base of hinge arm.



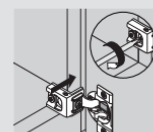
Step 4 — Rotate hinge arm

Rotate hinge arm to open position to secure. "click"



Step 5 — Reattach door

Align door and reattach by inserting and tightening installation screws.



NOTE: Restriction clip limits door opening angle to 86°

Thank you for selling your House Brand, Thomasville Cabinetry! We are your partners to help you with the sale every time! Visit your web page <https://www.THAHD.com>

TH&A

Todd Haley & Associates



MASTERBRAND
CABINETS, INC.