

**May 2022**

TH&A Monthly Training

*Thomasville Experience:****Adding Spec Book Notes
To your 2020 Design***Do you have a
20-20 question?Ask your
Thomasville Representative!Always **DWYSBO**, Design With Your Spec Book Open!

Please be the professional and manage homeowner expectations. Availability of materials continues to be unpredictable. When disruptions occur, they impact shipping schedules and trigger backorders. Advise homeowners **NOT** to tear out kitchens and baths until cabinets are delivered and inspected.

Adding Spec Book Notes To your 2020 Design

Adding Notes to your design will not only help your installer to understand the vision of the project but will also raise the bar of your level of attention to details above others in the industry.

TH&A

Todd Haley & Associates

Your Store Representative**Thomas D. Clarke CKD**

225-240-0529 cell

tclarke@toddhaley.com

Adam Johnson

678-736-9934

ajohnson@toddhaley.com

Ginny Edens

770-424-7518 office

gedens@toddhaley.com

Paul Cunningham

615-681-2686 cell

pcunningham@toddhaley.com

www.THAHD.com

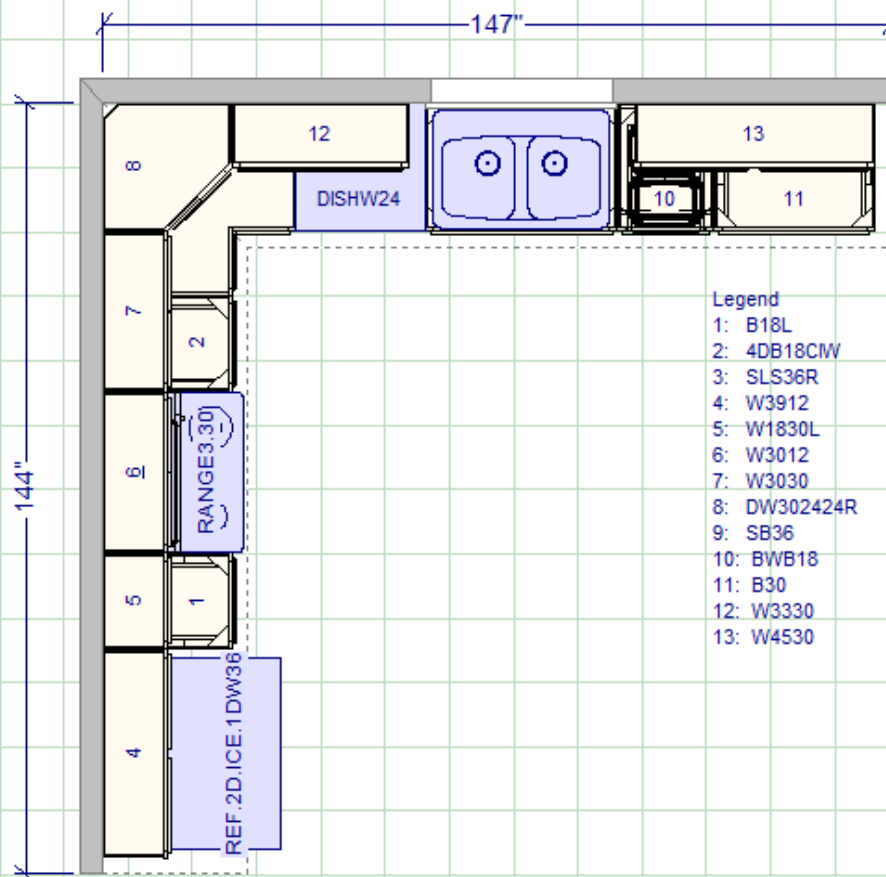
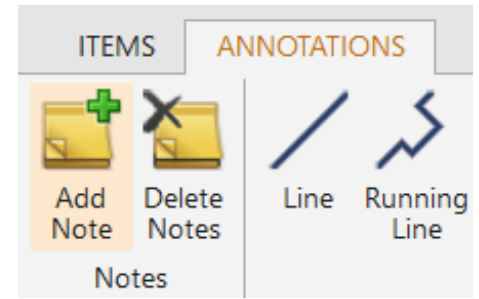
Open a copy of the Spec Book Collection you are working in. This can be found on www.mbcidesignerhandbook.com or the www.THAHD.com page under the training tab.

Drag your cursor across the information you wish to highlight and right click copy.

- **Oak** is a strong, open-grained hardwood that ranges in color from white to pink and reddish tones. Streaks of green, yellow and even black may appear due to mineral deposits. Oak may also contain wormholes and wild, varying grain patterns. This distinct graining is considered a desirable quality.
- **Painted** finishes combine hardwoods and engineered materials including solid-wood, engineered materials — such as medium density fiberboard (MDF) and high density fiberboard (HDF) — and similar composite materials providing a smoother surface for painting and superior stability, consistency, and durability.
- ***Rustic Alder** is characterized by its light brown and reddish undertones and may contain a variety of pin holes, open and closed knots of various sizes and colors, small cracks, bird pecks, mineral streaks, and grain variation. Some knots may have small holes through the panel. Larger holes will not be filled. In addition, the wood will contain color difference caused by variations in minerals found in the soil, creating visible mineral tracks.
 - Sound Closed Knot** (not moveable) – Expected up to approximately 3" in diameter
 - Sound Knot with Cracks** – Expect sound knots with open cracks up to approximately 1" in length
 - Open Knot** (through door) – Expected with open area up to approximately 3/4" in diameter
Note: 3/4" diameter is about the size of a penny. Holes created by open knots pass completely through the door and are desirable for this rustic look.
 - Unsound Knot** (moveable core) – Not to be expected
 - Knot Cluster** (cluster of tight sound knots) – To be expected
 - Worm Holes/Pin Holes** (can go through the door) – Can be expected up to approximately 1/4" in diameter
 - Worm Tracks** – Can be expected in sizes up to approximately 1/8" wide by 8" long
- ***Rustic Hickory** is a strong, heavy hardwood known for distinctive graining patterns. Color will vary from nearly white to dark brown, with wild flowing grain patterns and dramatic color variations. Rustic Hickory can have a fine uniform grain to large knots appearing black and brown in color of various shapes and sizes, sapwood, mineral and some checking. Doors, drawer fronts, and selected trim items will feature rustic characteristics. Other areas of the product will utilize standard Hickory.
 - Sound Closed Knot** (not moveable) – Expected up to approximately 3" in diameter

See Next Page to continue:

Find “Add Note” under the Annotations Menu. Paste the text copied from your spec book into the Notes Box. For this example we are using the Rustic Alder Characteristics.



- Legend**
- 1: B18L
 - 2: 4DB18CW
 - 3: SLS36R
 - 4: W3912
 - 5: W1830L
 - 6: W3012
 - 7: W3030
 - 8: DW302424R
 - 9: SB36
 - 10: BWB18
 - 11: B30
 - 12: W3330
 - 13: W4530

*Rustic Alder is characterized by its light brown and reddish undertones and may contain a variety of pin holes, open and closed knots of various sizes and colors, small cracks, bird pecks, mineral streaks, and grain variation. Some knots may have small holes through the panel. Larger holes will not be filled. In addition, the wood will contain color difference caused by variations in minerals found in the soil, creating visible mineral tracks.

- Sound Closed Knot (not moveable) - Expected up to approximately 3" in diameter
- Sound Knot with Cracks - Expect sound knots with open cracks up to approximately 1" in length
- Open Knot (through door) - Expected with open area up to approximately 3/4" in diameter
- Note: 3/4" diameter is about the size of a penny. Holes created by open knots pass completely through the door and are desirable for this rustic look.
- Unsound Knot (moveable core) - Not to be expected
- Knot Cluster (cluster of tight sound knots) - To be expected
- Worm Holes/Pin Holes (can go through the door) - Can be expected up to approximately 1/4" in diameter
- Worm Tracks - Can be expected in sizes up to approximately 1/8" wide by 8" long

***Thomasville Cabinetry
Available only at Home Depot!
We are Home Depot!***

