

Thomasville Experience: Making Peninsula Cabinets– Framed Collections

April 2021
TH&A Monthly Training
www.THAHD.com

Thomasville Experience:
Making Peninsula Cabinets

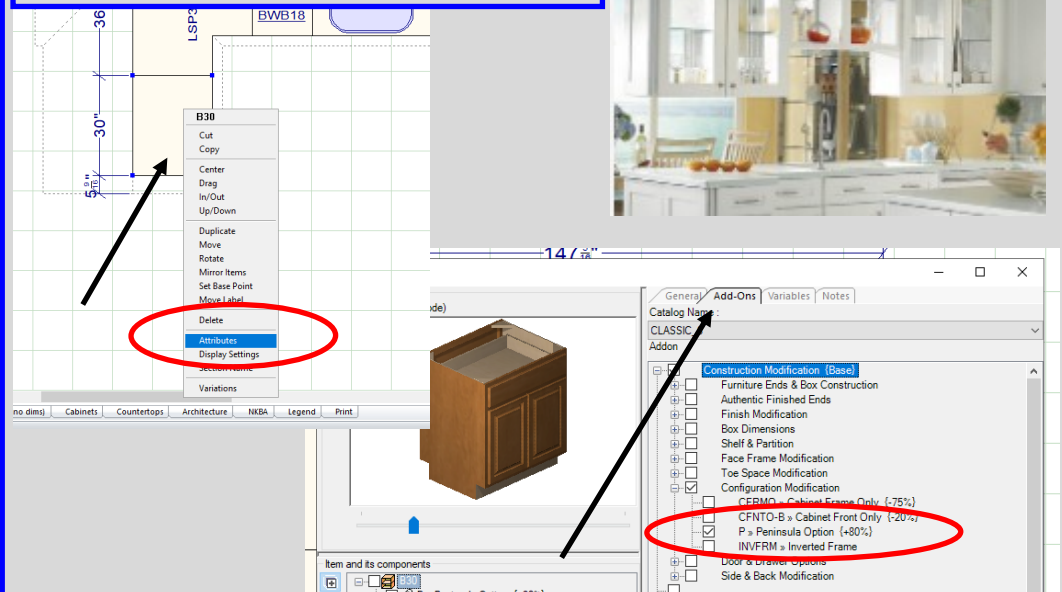
Do you have a
20-20 question?

Ask your
Thomasville Representative!

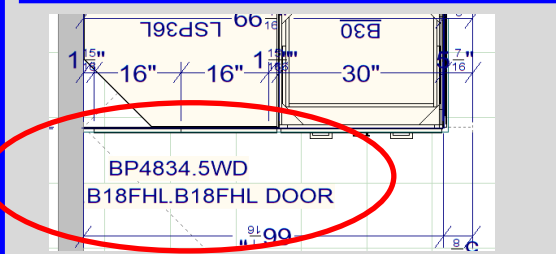
TH&A
Todd Haley & Associates

www.thomasvillecabinetry.com
www.homedepot.com


**Right-click on the desired cabinet.
Go into "Attributes"**



Under the Add-Ons Tab, Click the Plus Box for Construction Modifications and then Configuration Modification. Select Check Box for P - Peninsula Option. Then Select Apply and OK



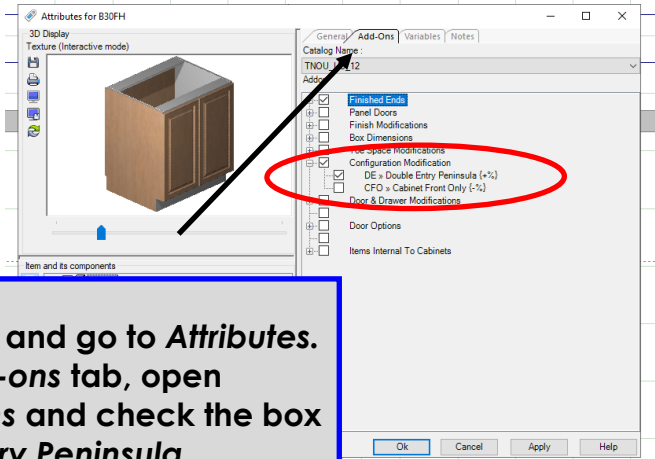
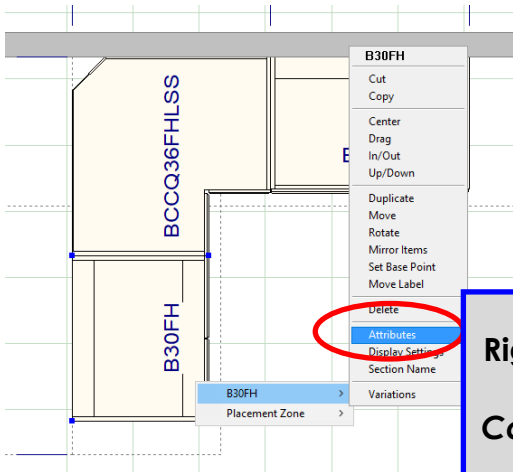
This increases the depth of the cabinet by 1/4", allowing you to add a skin and deco doors to the back of the adjacent cabinet!



Helpful Hint– The Peninsula Side will mimic the front. If you don't want a False Drawer Front, make sure to use a Full Height Cabinet.
Don't forget Base Molding or Toe Kicks

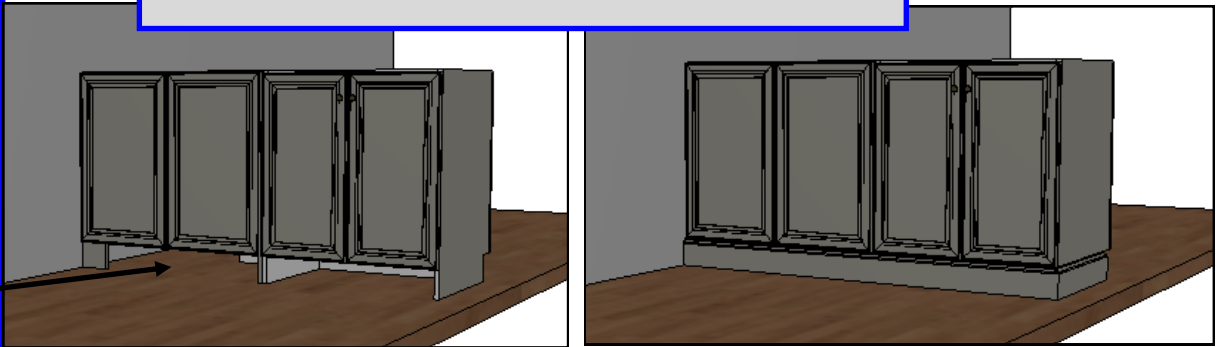
See Next Page to continue:

Thomasville Experience: Making Peninsula Cabinets Nouveau—Frameless



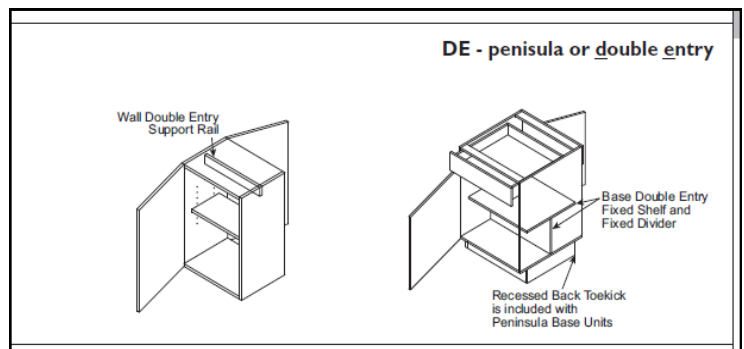
Right-Click on the cabinet and go to *Attributes*. Then under the *Add-ons* tab, open *Configuration Modifications* and check the box for *DE— Double Entry Peninsula*. Click *Apply* and *OK*.

Don't forget to plan for Base Molding to cover any open areas on the back side of the cabinets.



★ If you need to add a skin to an adjacent cabinet, modify the depth of one of the cabinets under *Box Dimensions*. Increasing or decreasing one by 1/4" will allow for a skin to be applied.

In Frameless Cabinets, additional structural support is needed for Peninsula cabinets. Support rails are added to the base and wall cabinets as shown.



***Thomasville Cabinetry
Available only at Home Depot!
We are Home Depot!***

